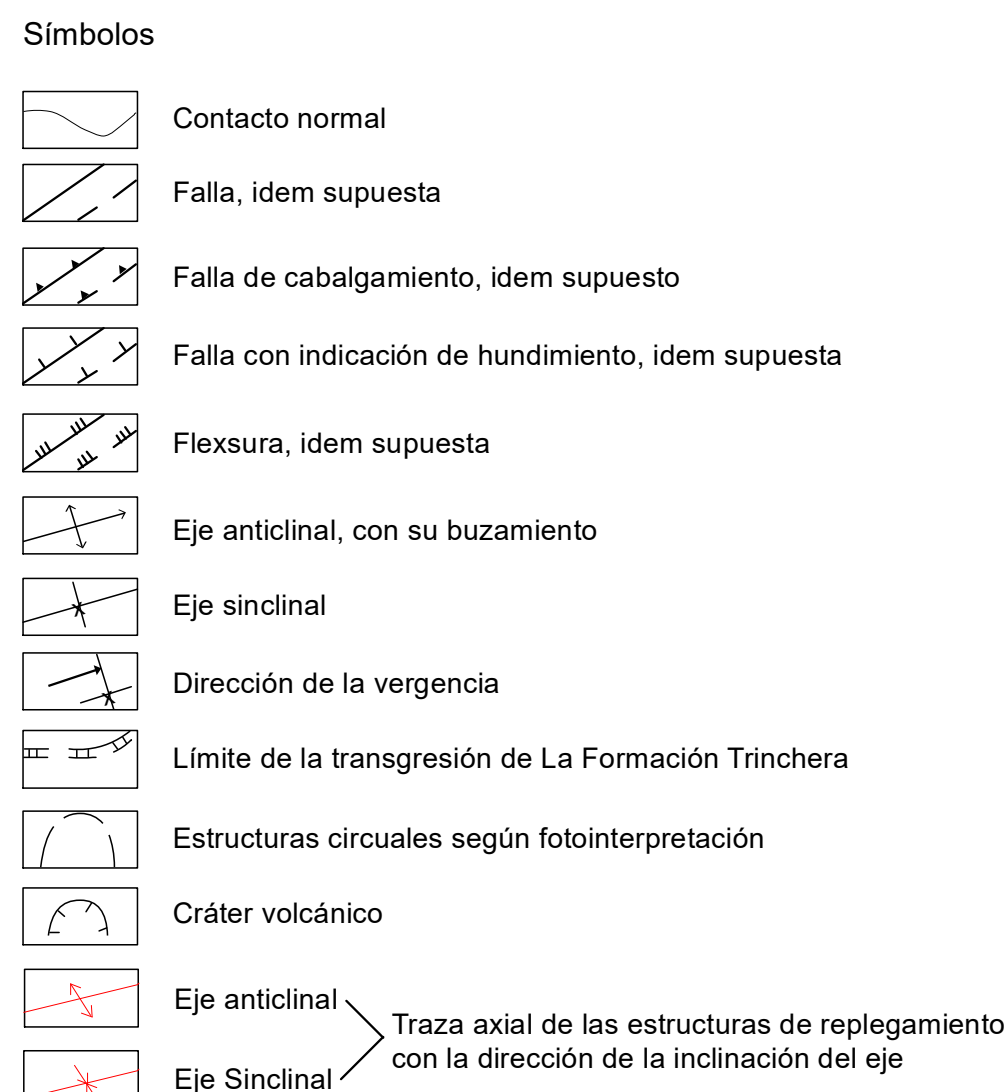
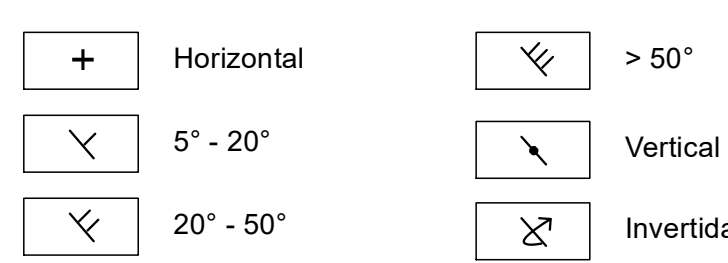


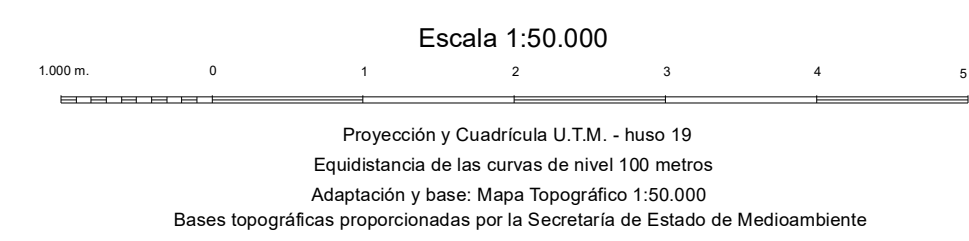
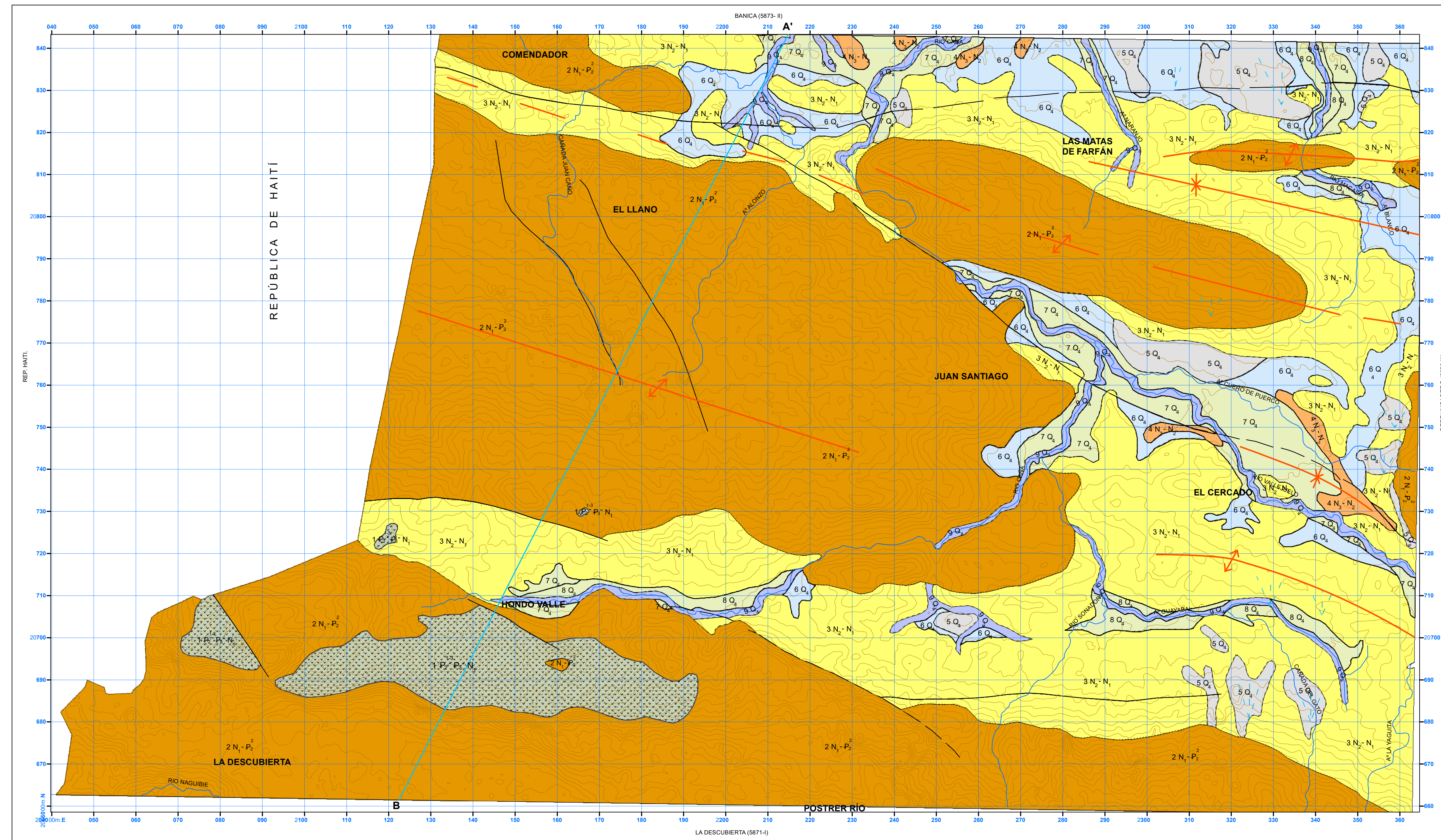
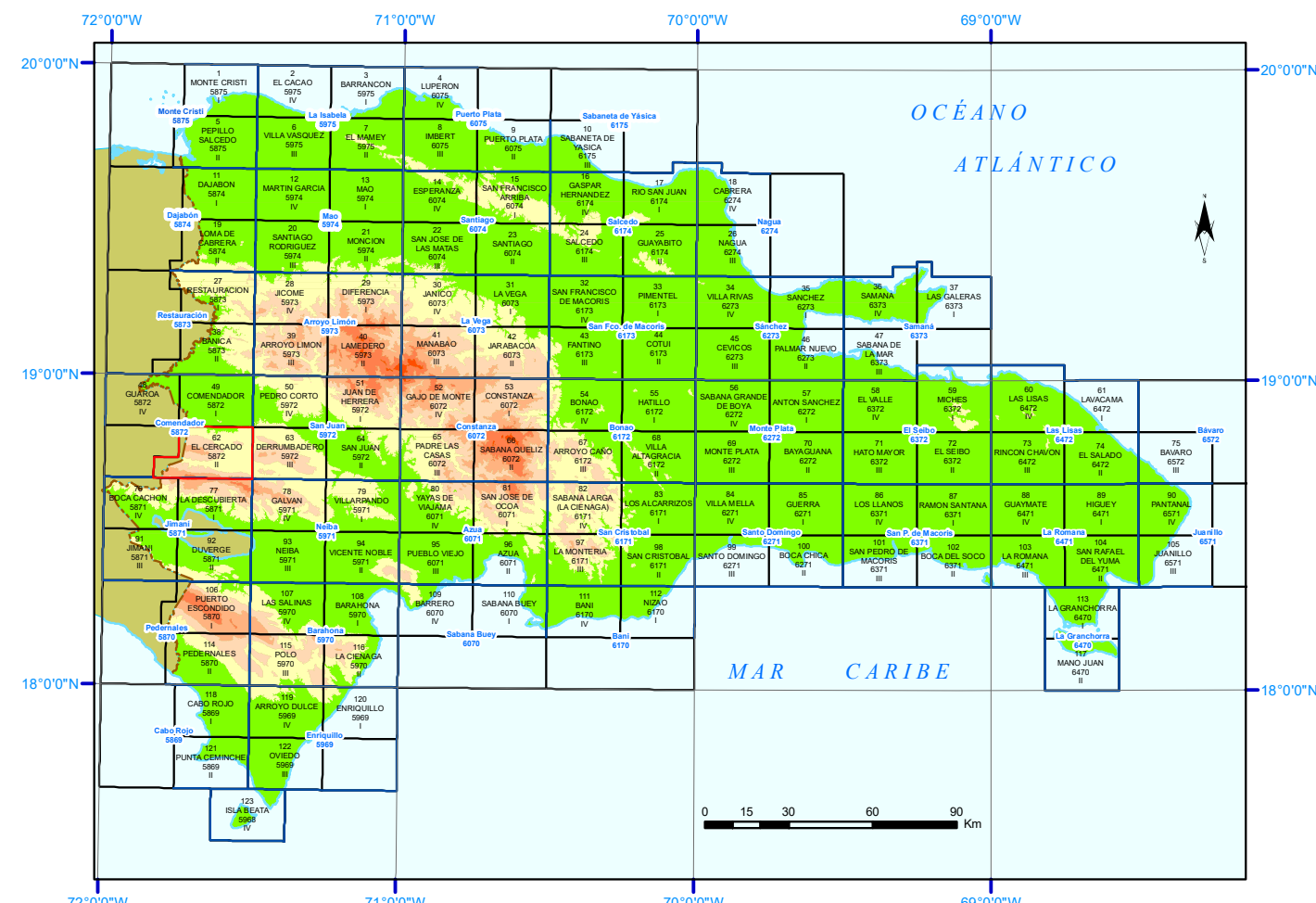
TRAMAS Y SÍMBOLOS ESPECÍFICOS PARA SECCIONES Y COLUMNAS



Bumbo y Buzamiento de la estratificación En la parte según fotointerpretación

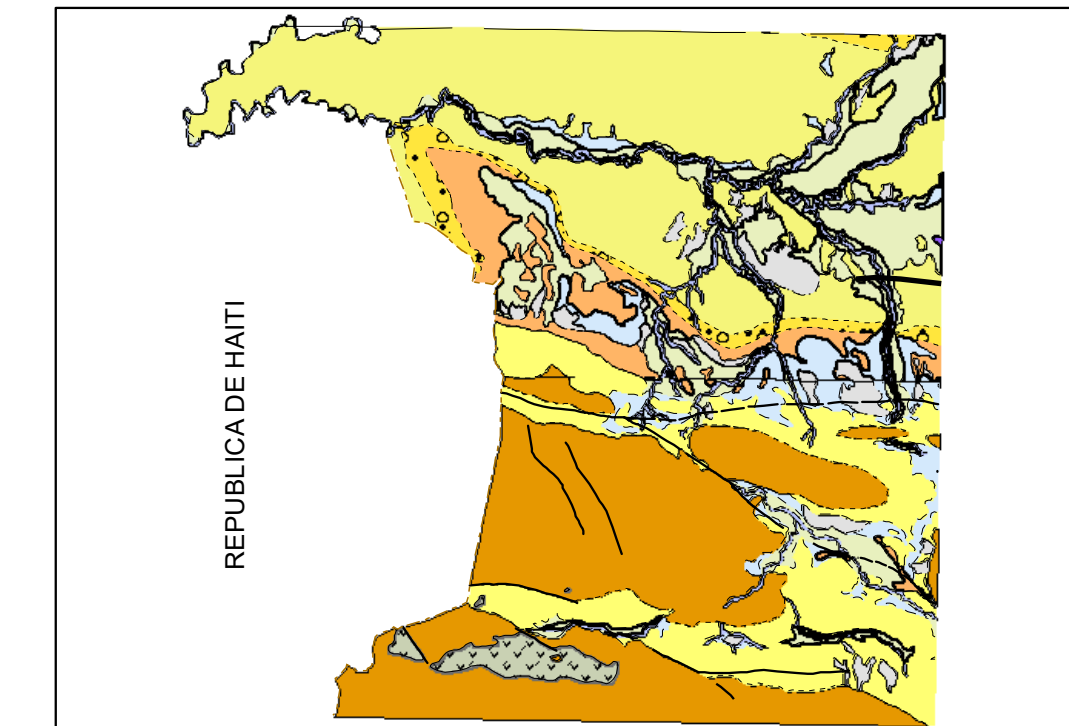


MAPA ÍNDICE



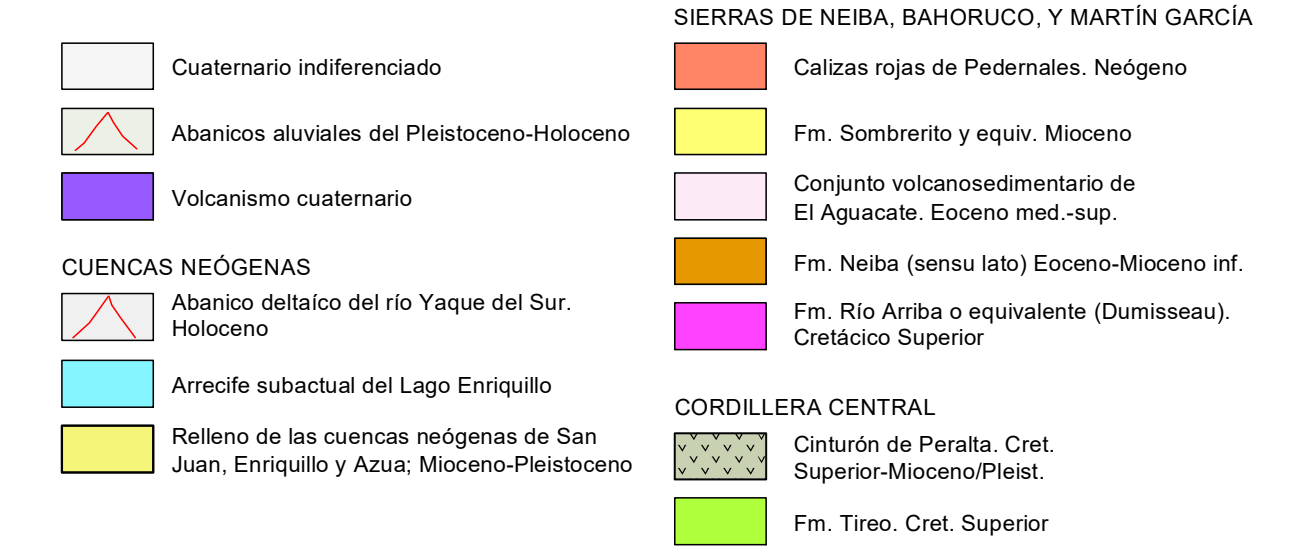
Autor: Ing. Jesús Rodríguez Reyes
Director del Proyecto: Dr. Santiago J. Muñoz Tapia
Cartografiado por: Samuel González Delgado
Ing. Kenny Agramonte
Supervisión Técnica: Ing. Leonardo Concepción Diela

ESQUEMA GEOLÓGICO REGIONAL

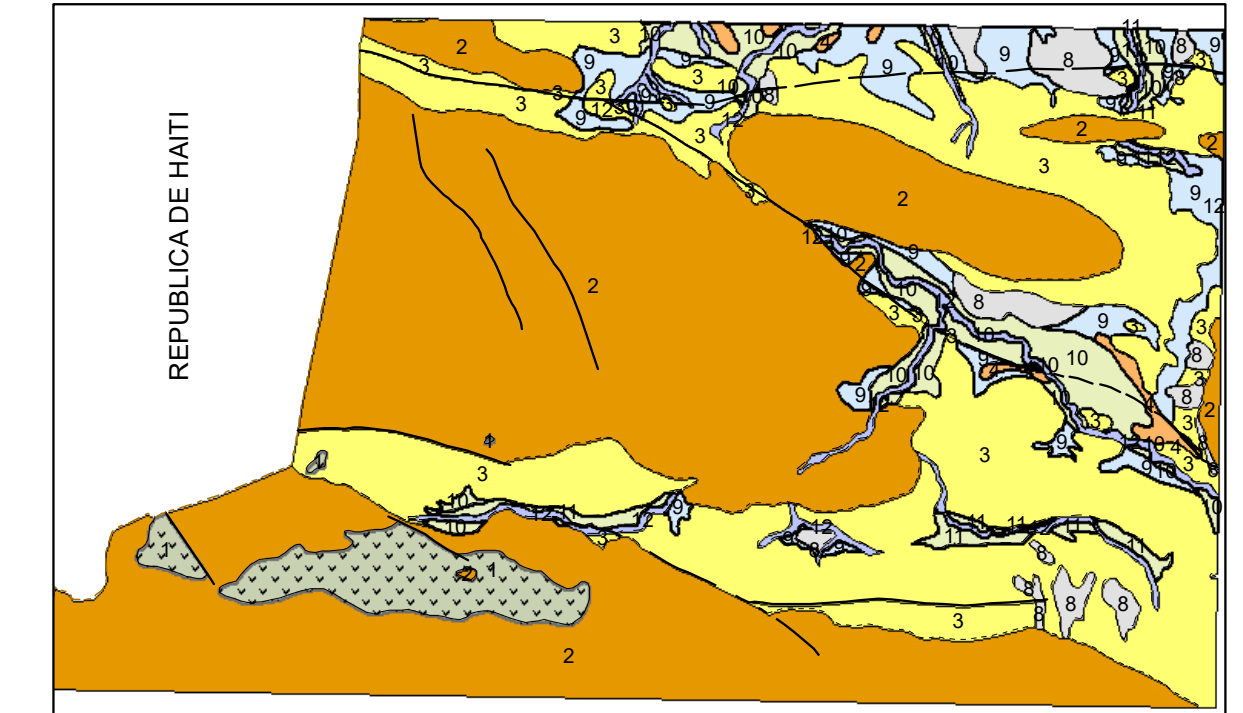


Escala 1:400.000

LEYENDA

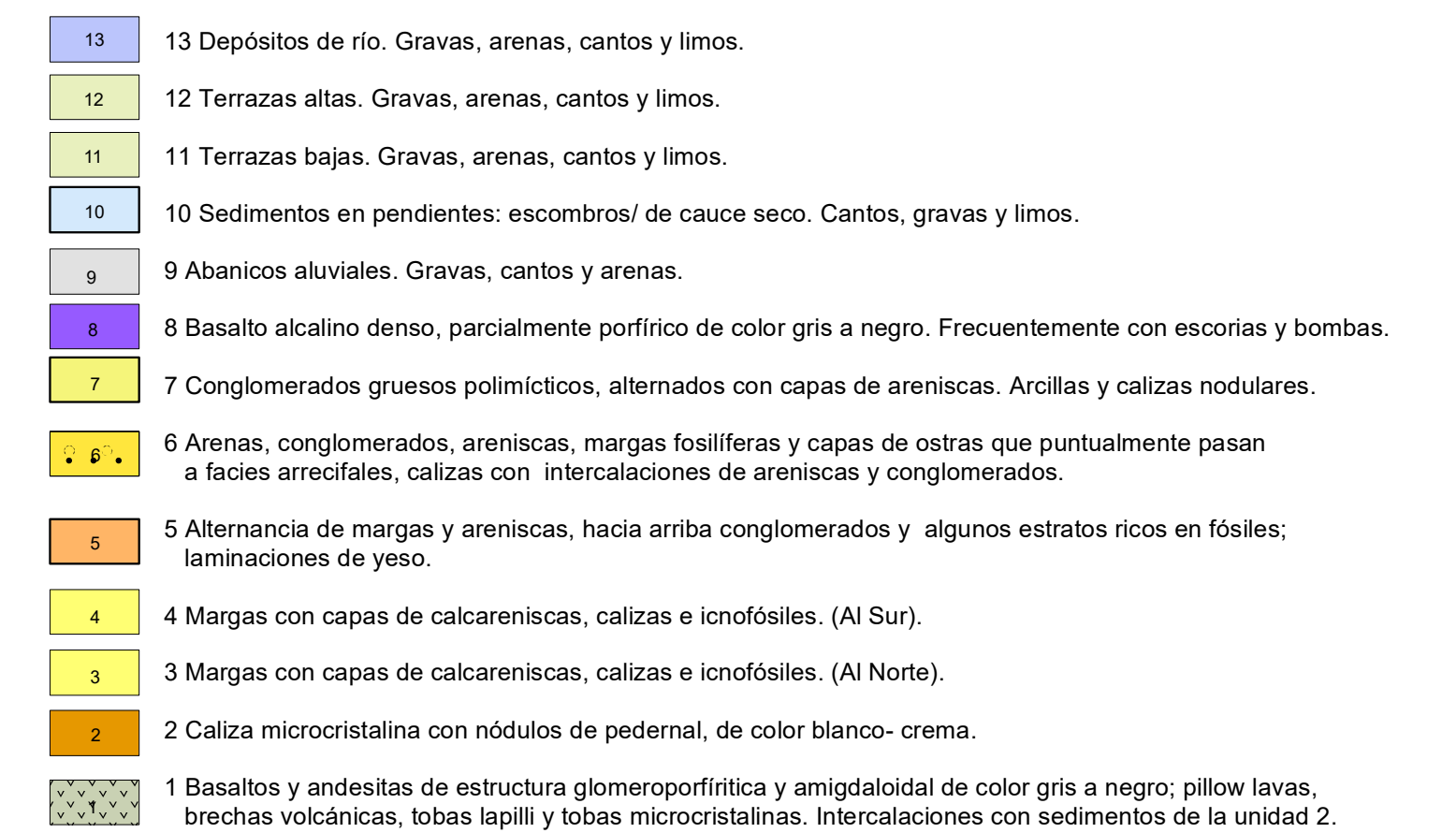


ESQUEMA TECTÓNICO

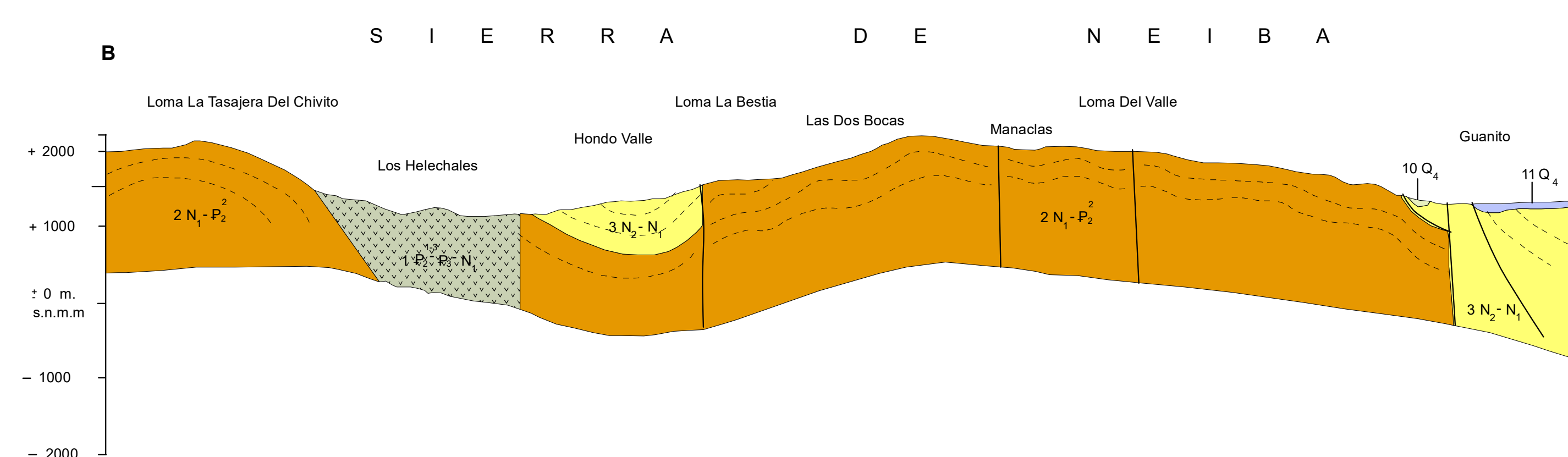


Escala 1:400.000

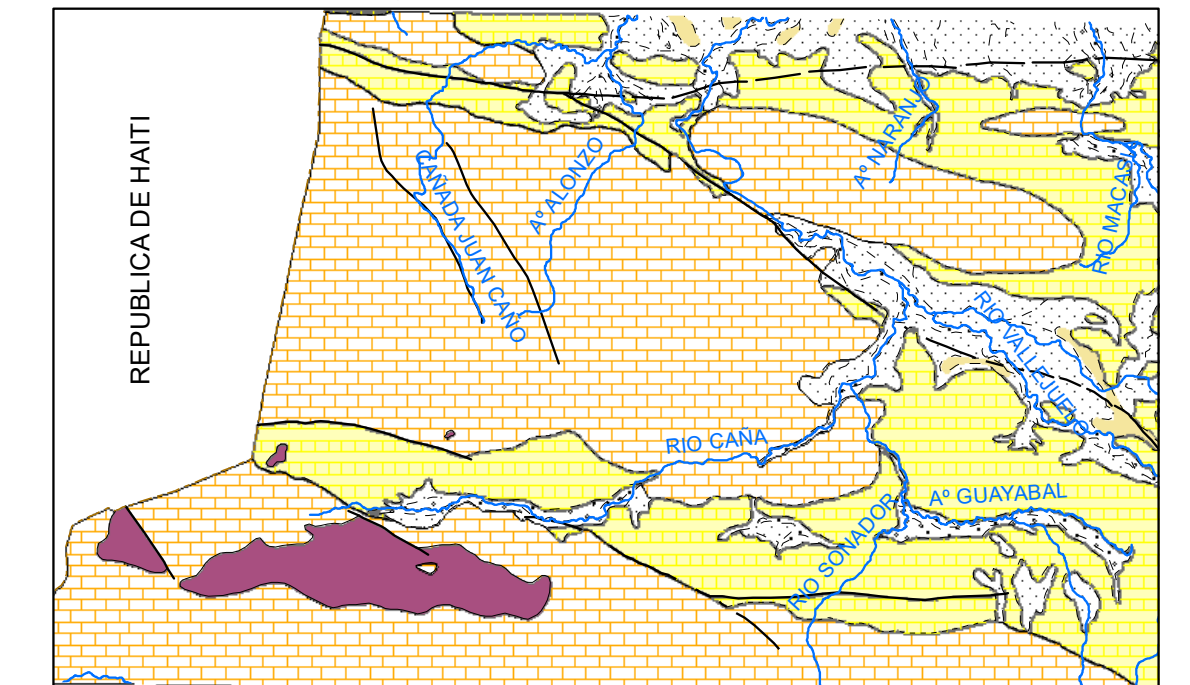
LEYENDA



SECCIÓN GEOLÓGICA Escala Horizontal y Vertical 1:120.000



ESQUEMA HIDROGEOLÓGICO



Escala 1:200.000

LEYENDA

