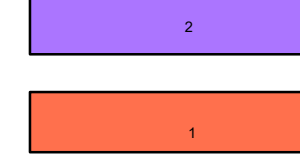
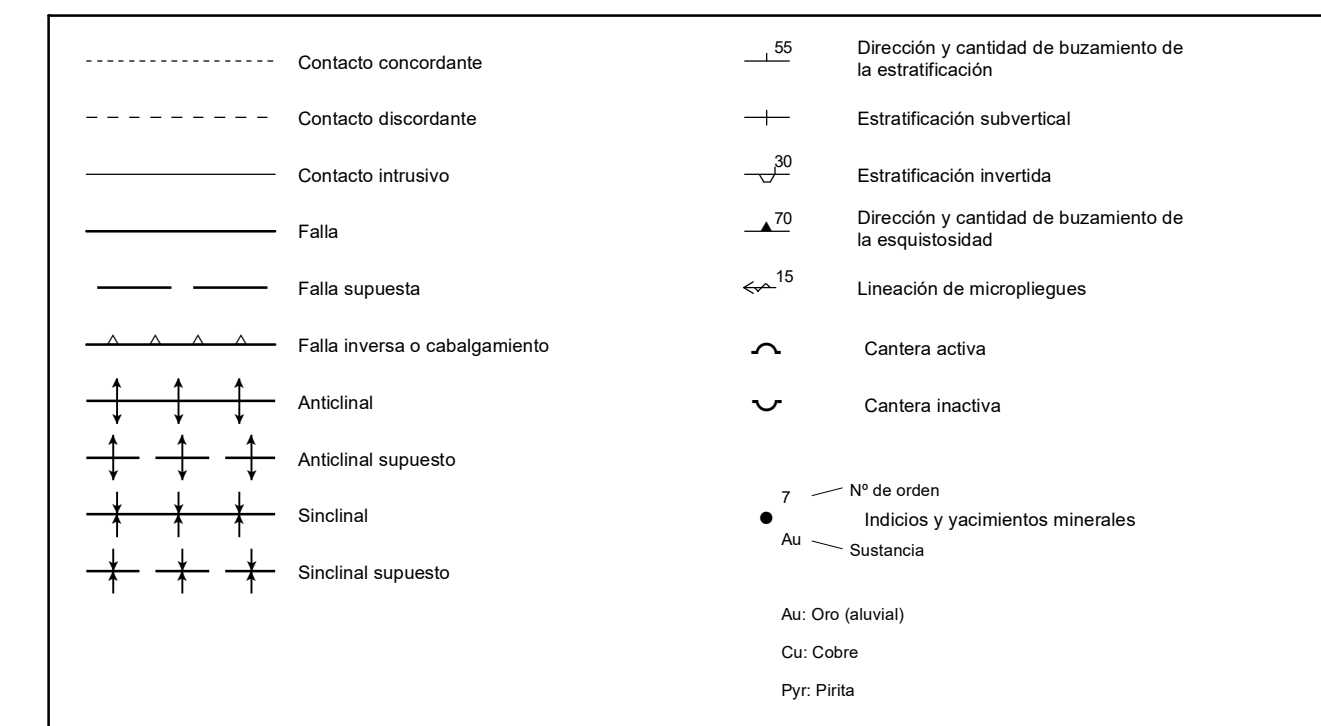


ROCAS PLUTÓNICAS

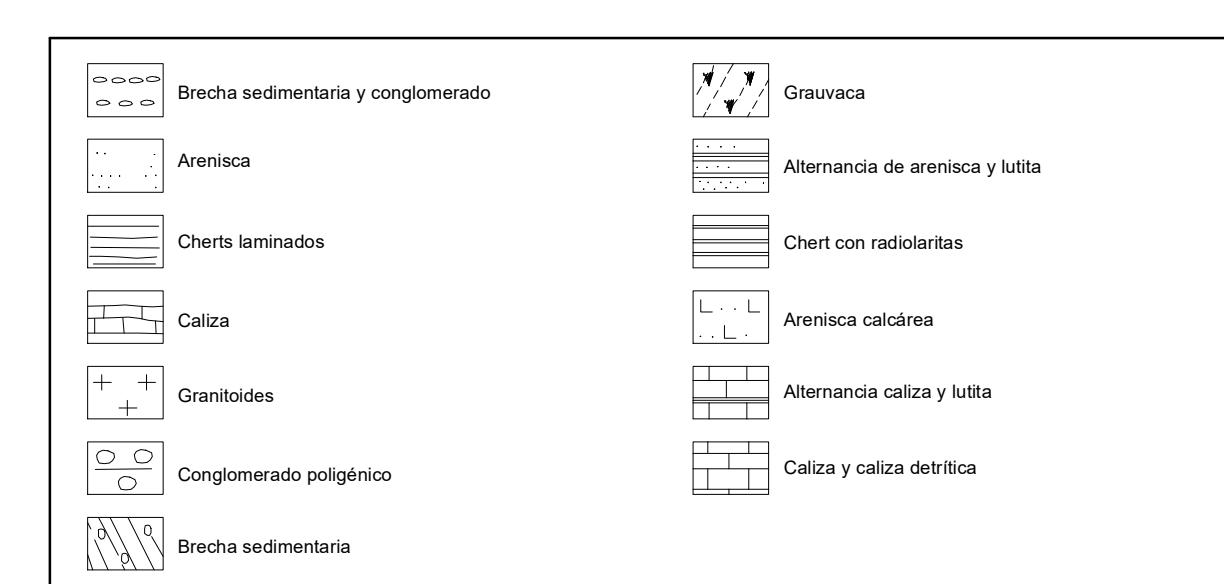


Alteración laterítica

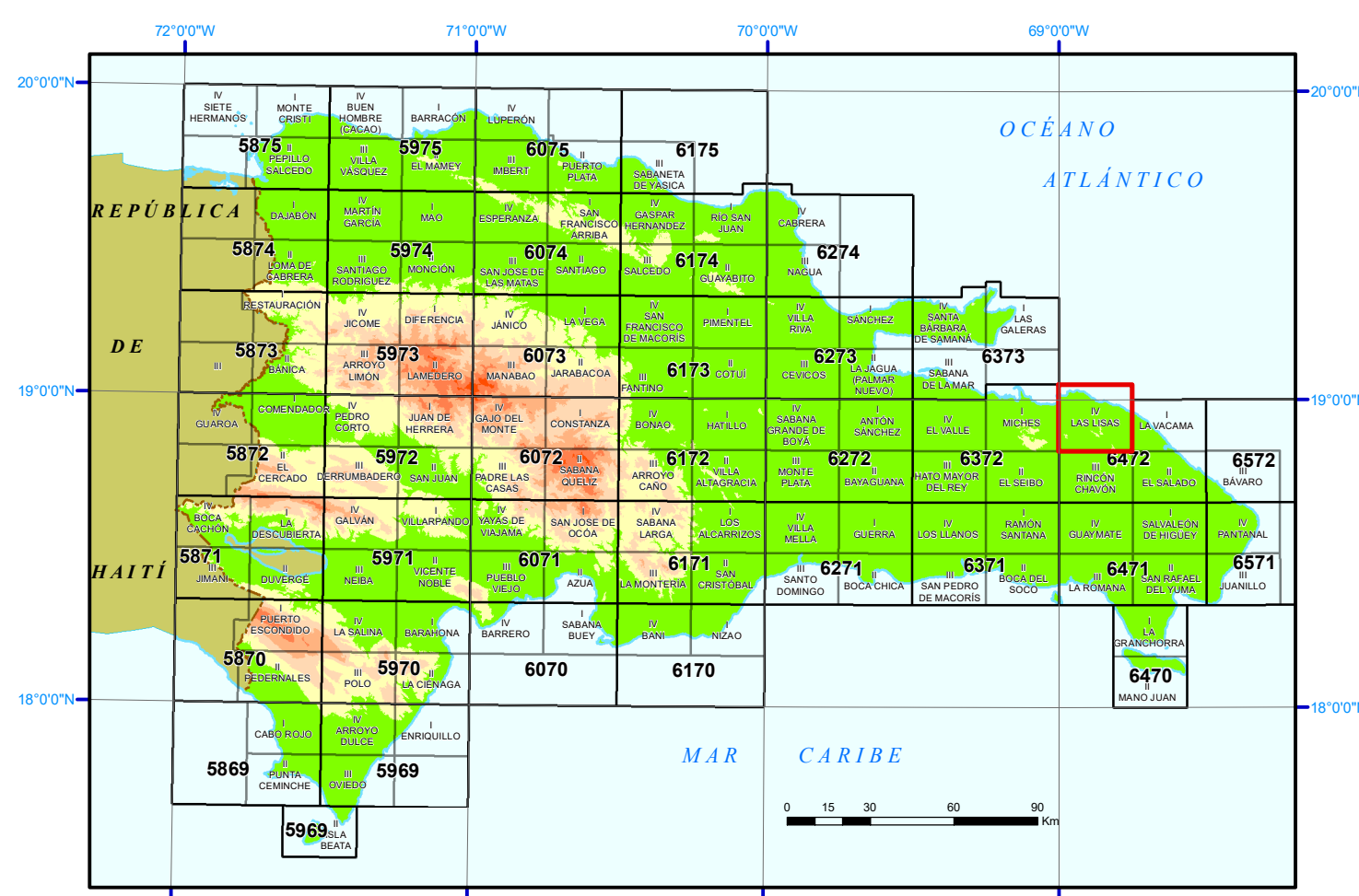
SÍMBOLOS GEOLÓGICOS



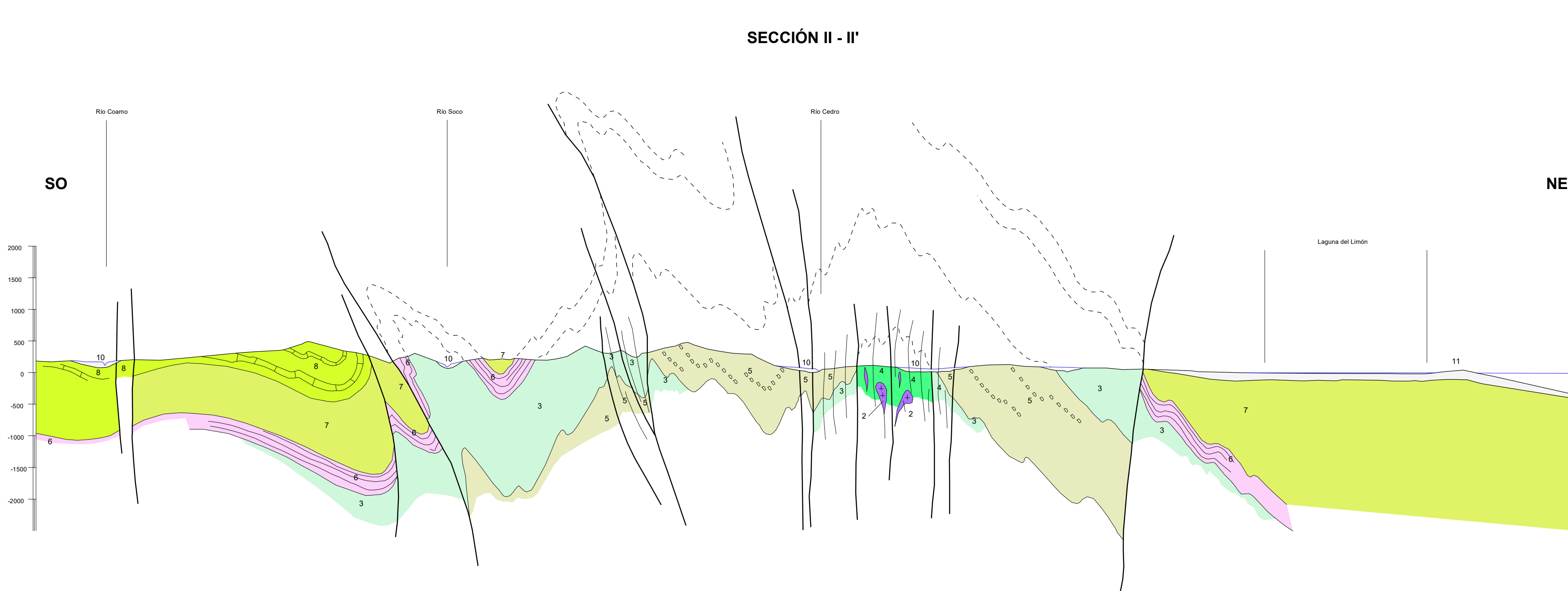
TRAMAS Y SÍMBOLOS ESPECÍFICOS PARA SECCIONES Y COLUMNAS



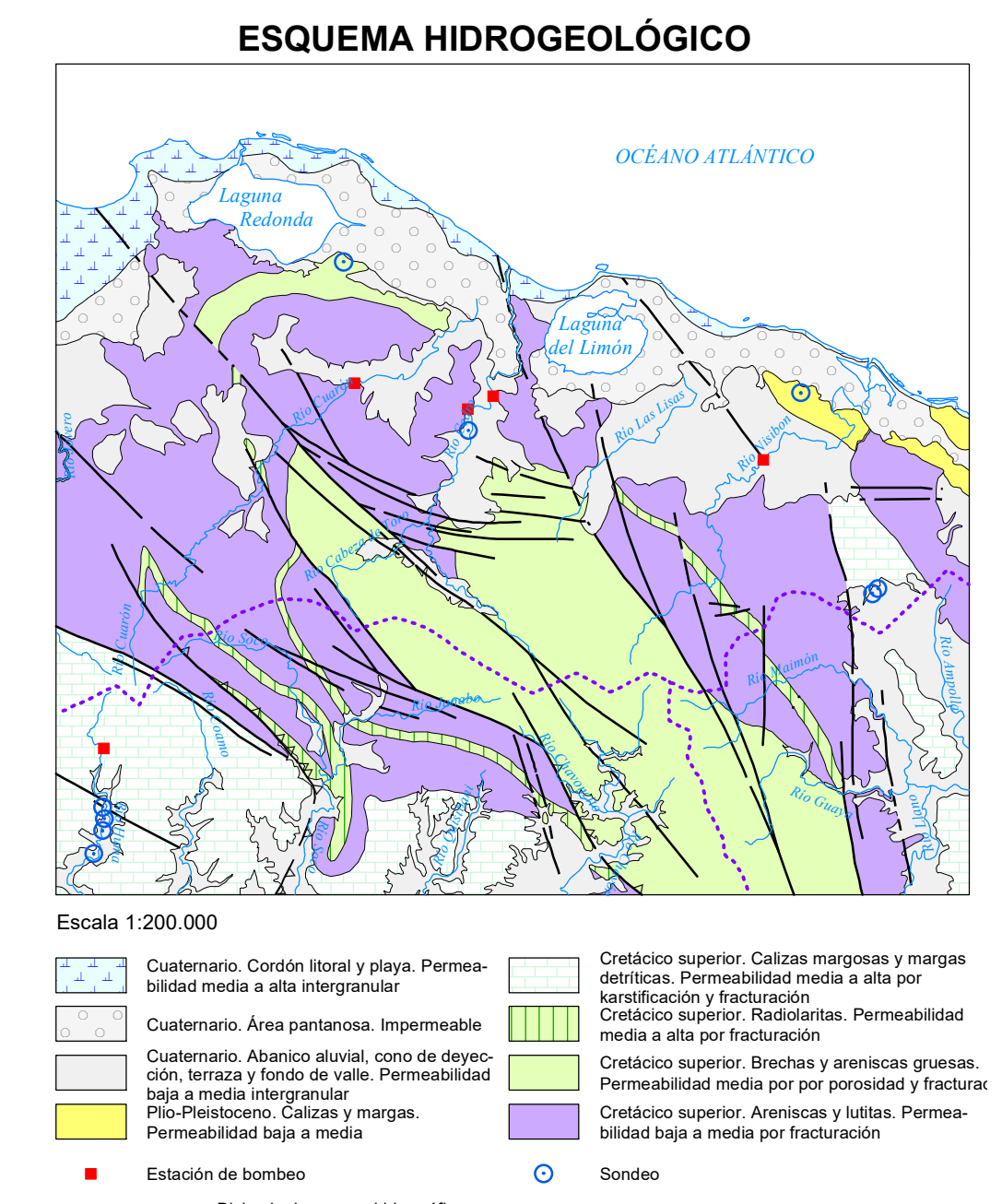
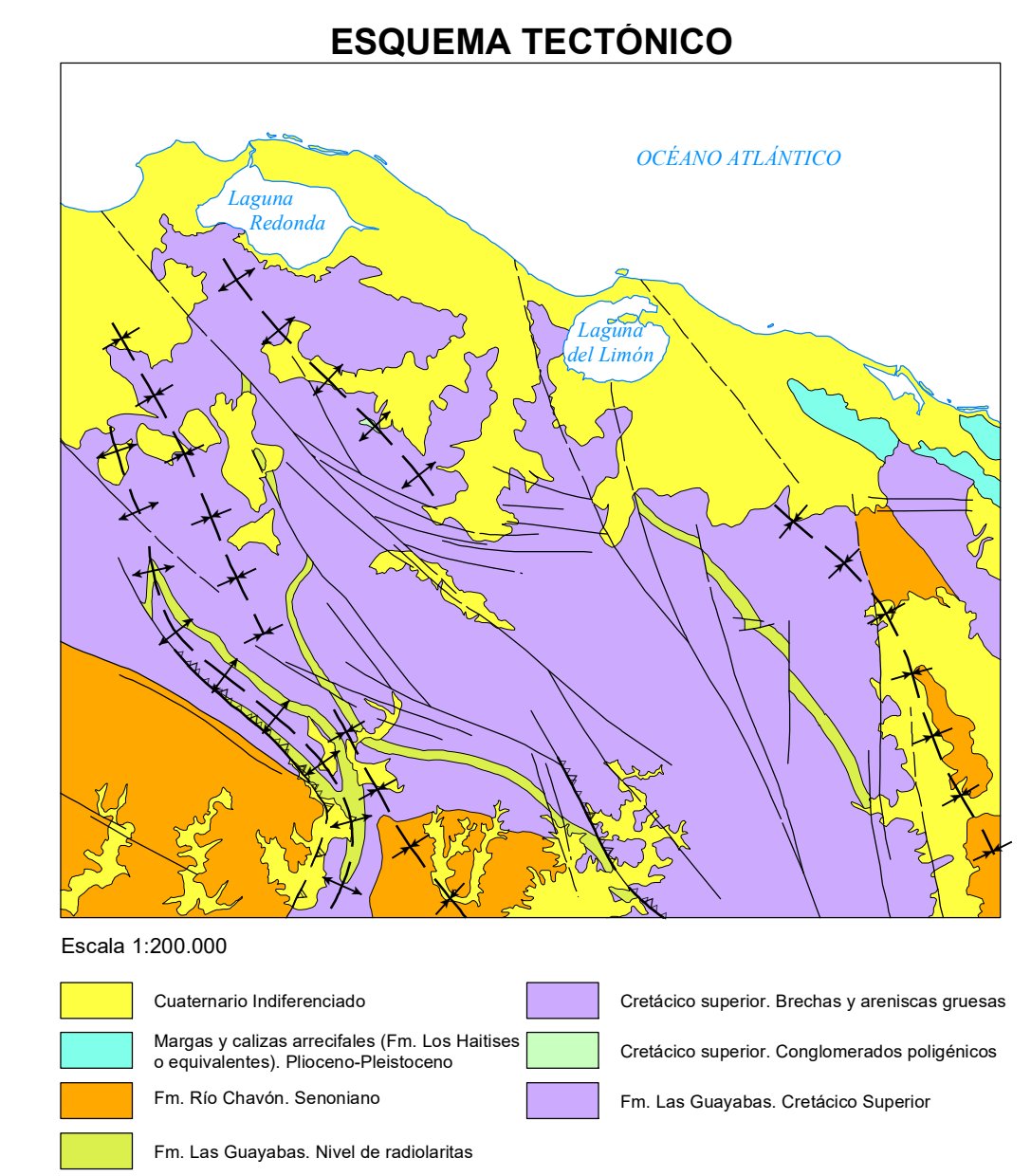
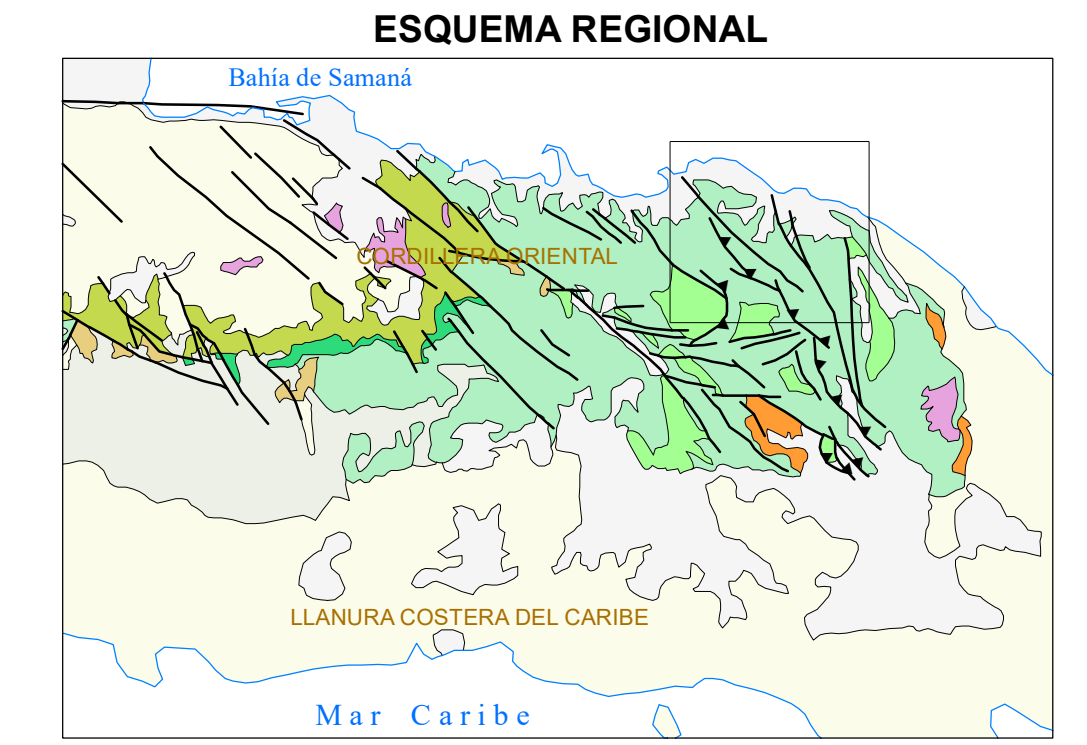
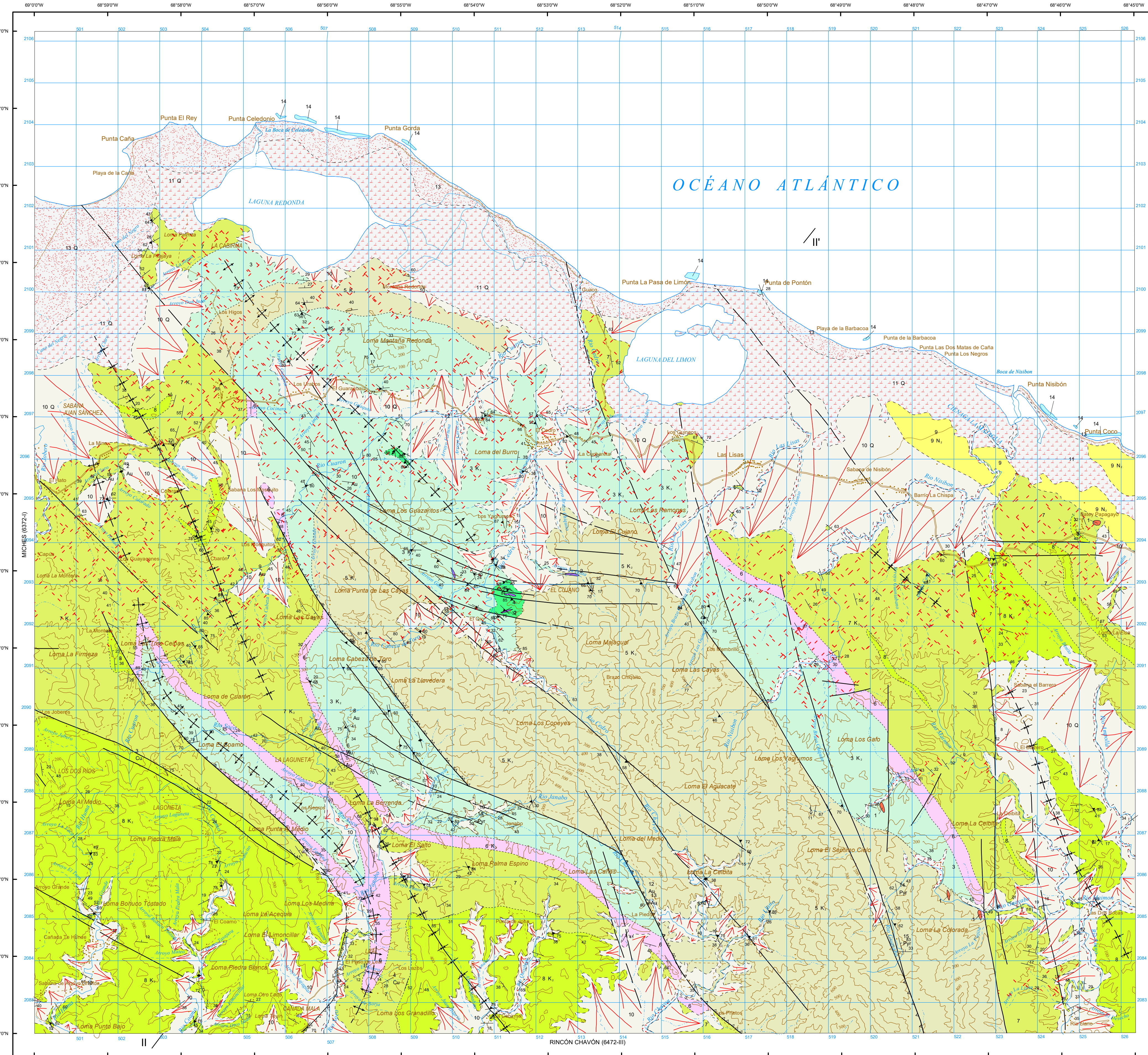
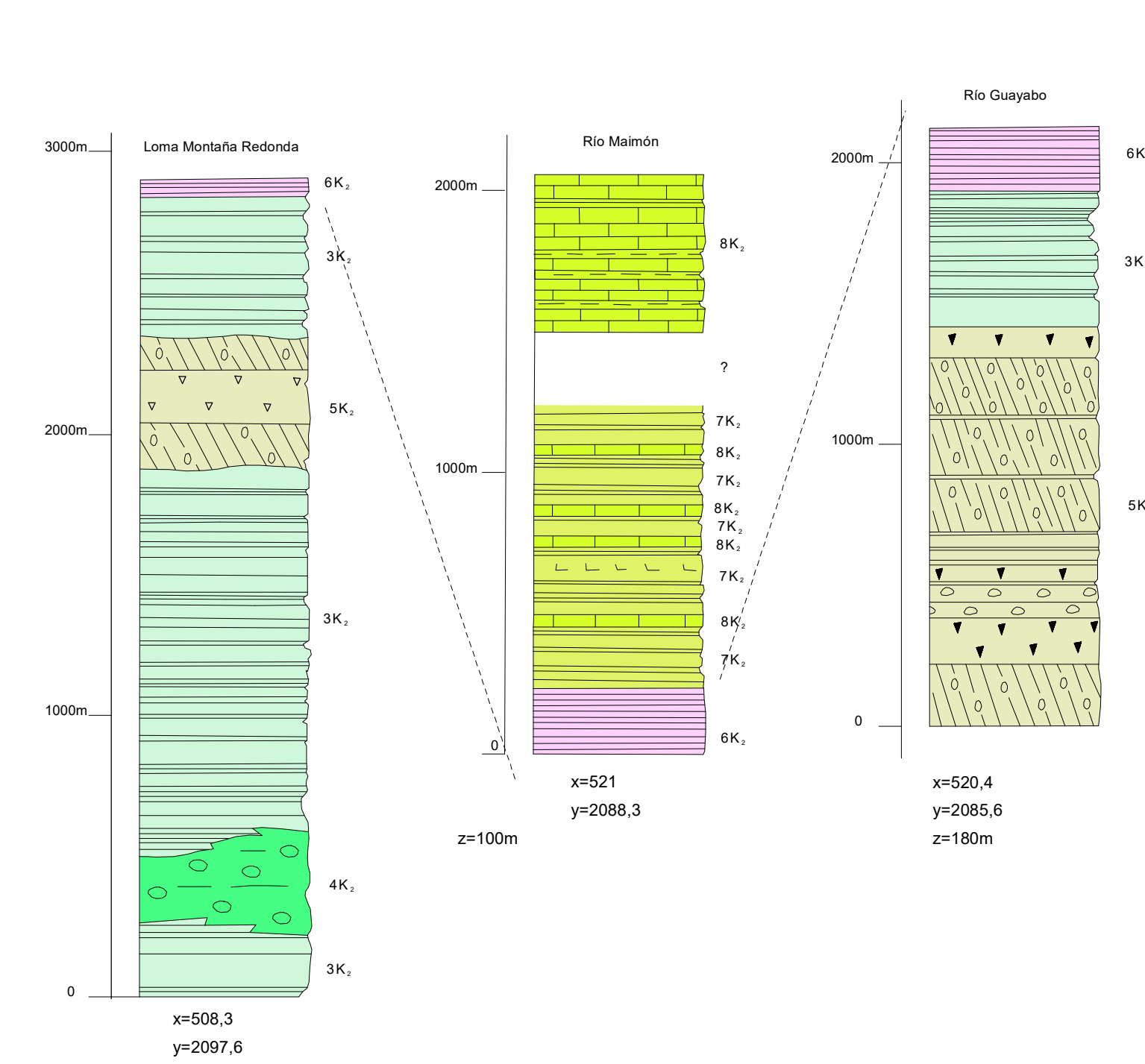
MAPA ÍNDICE



SECCIONES GEOLÓGICAS



COLUMNAS ESTRATIGRÁFICAS SINTÉTICAS EN LAS PRINCIPALES UNIDADES O ZONAS



Realizado por el Consorcio IGME-BRGM-INYPSA (2002-2004)
Autor: Jacques Monthil (BRGM)
Director del Proyecto: Eusebio Lopera Caballero (IGME)
Supervisión Técnica: UTG-SYSMIN (AURENSA)