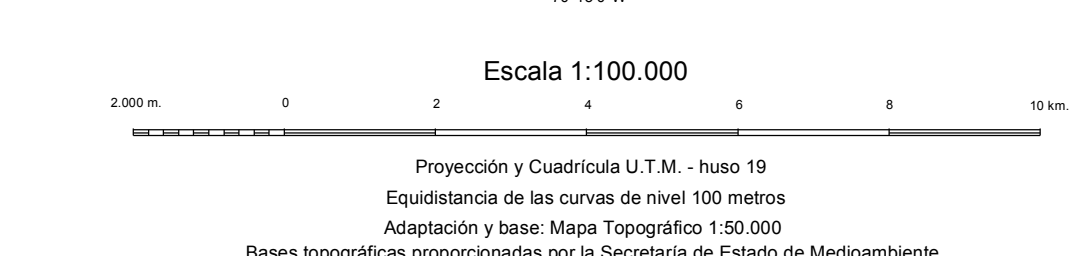
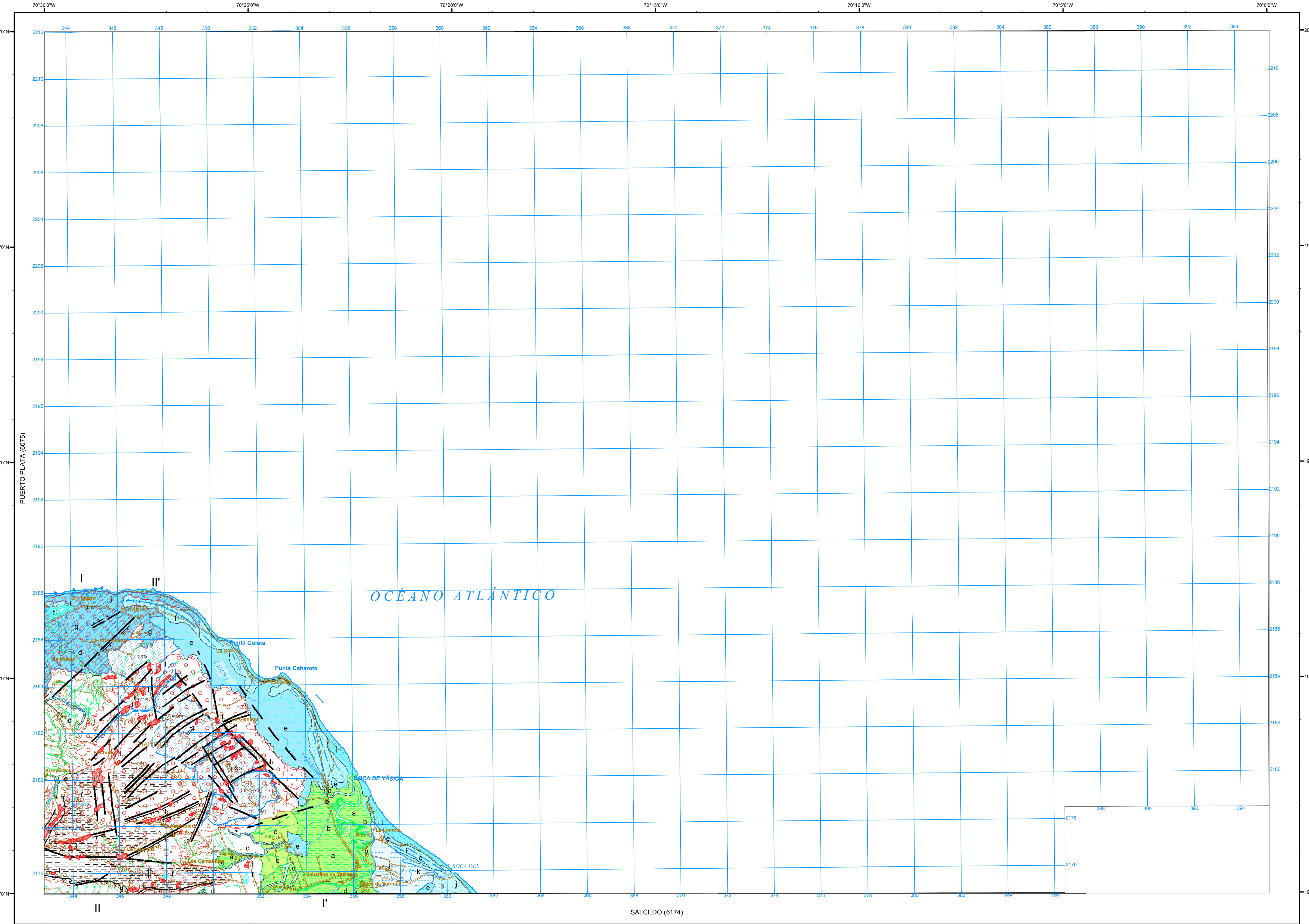


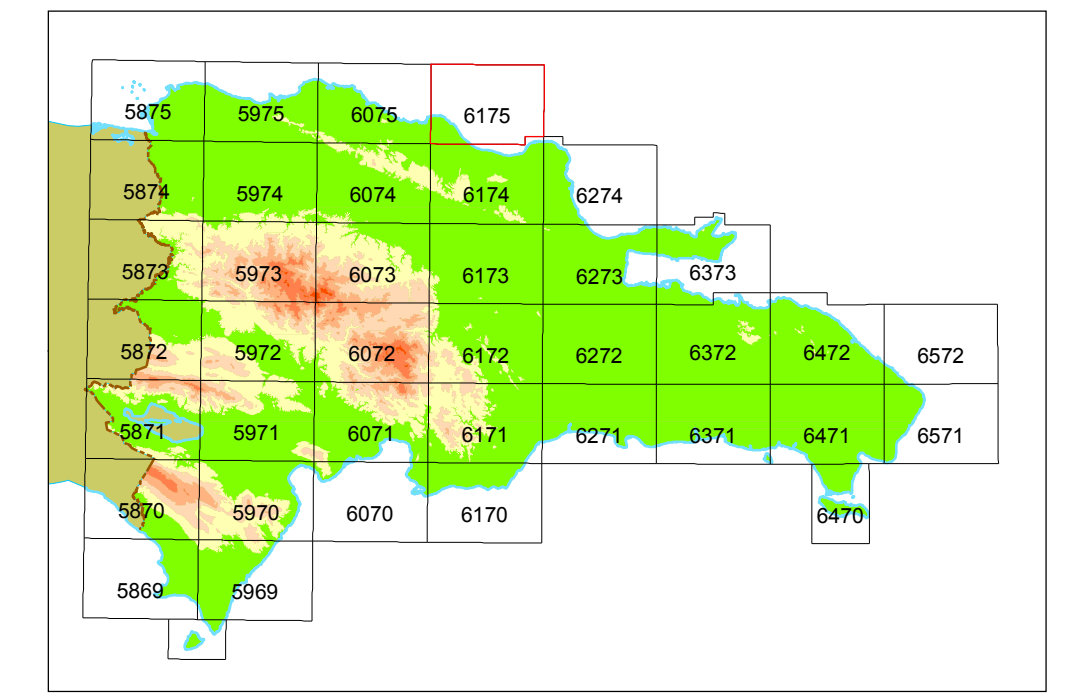
MAPA GEOMORFOLÓGICO DE LA REPÚBLICA DOMINICANA

ESCALA 1:100.000



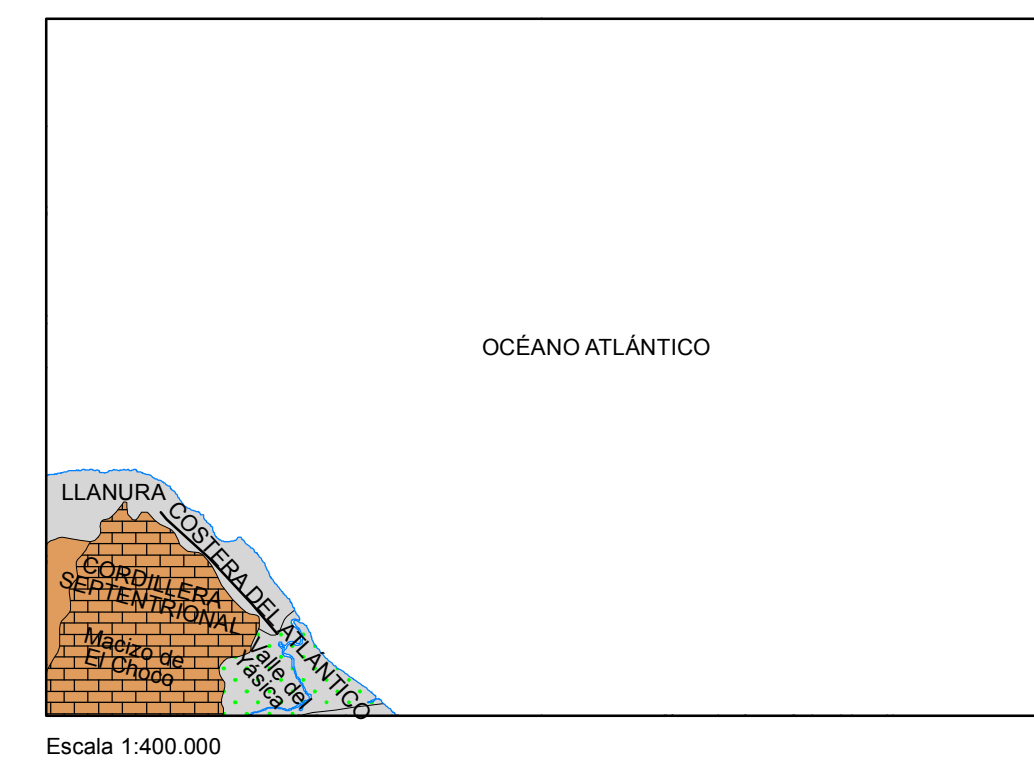
Realizado por el Consorcio IGME-BRGM-INYPSA (2007-2010)
Autor: Alberto Díaz de Neira (INYPSA)
Director del Proyecto: Eusebio López Caballero (IGME)
Supervisión Técnica: UTG-SYSMIN (TYPSA)

ESQUEMA DE SITUACIÓN

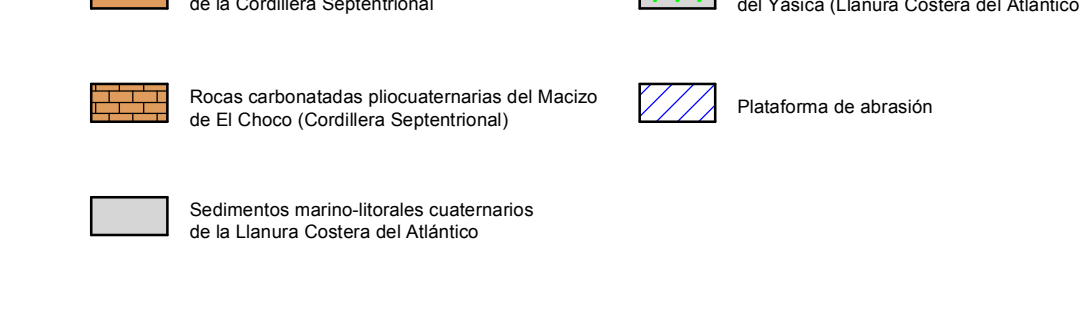


Escala 1:3.500.000

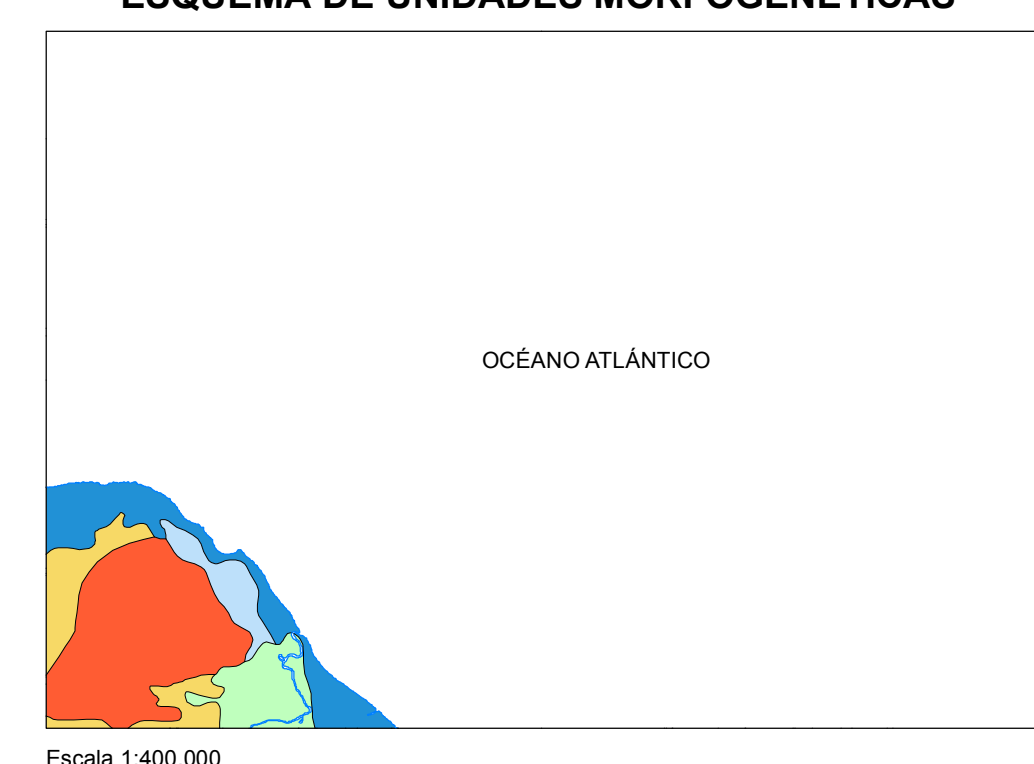
ESQUEMA MORFOESTRUCTURAL



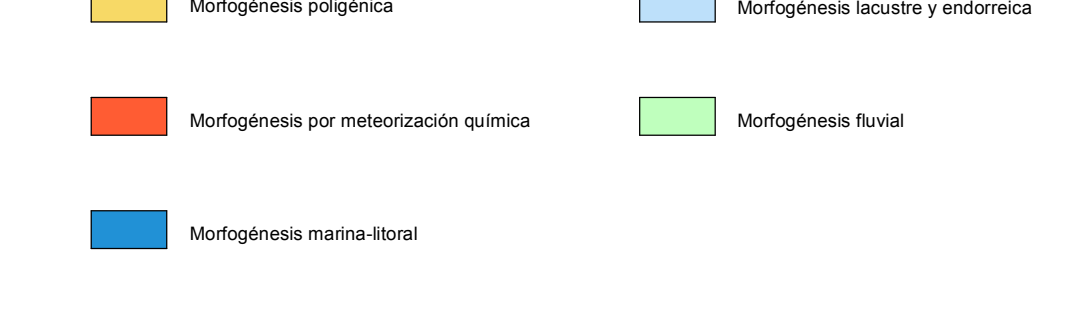
Escala 1:400.000



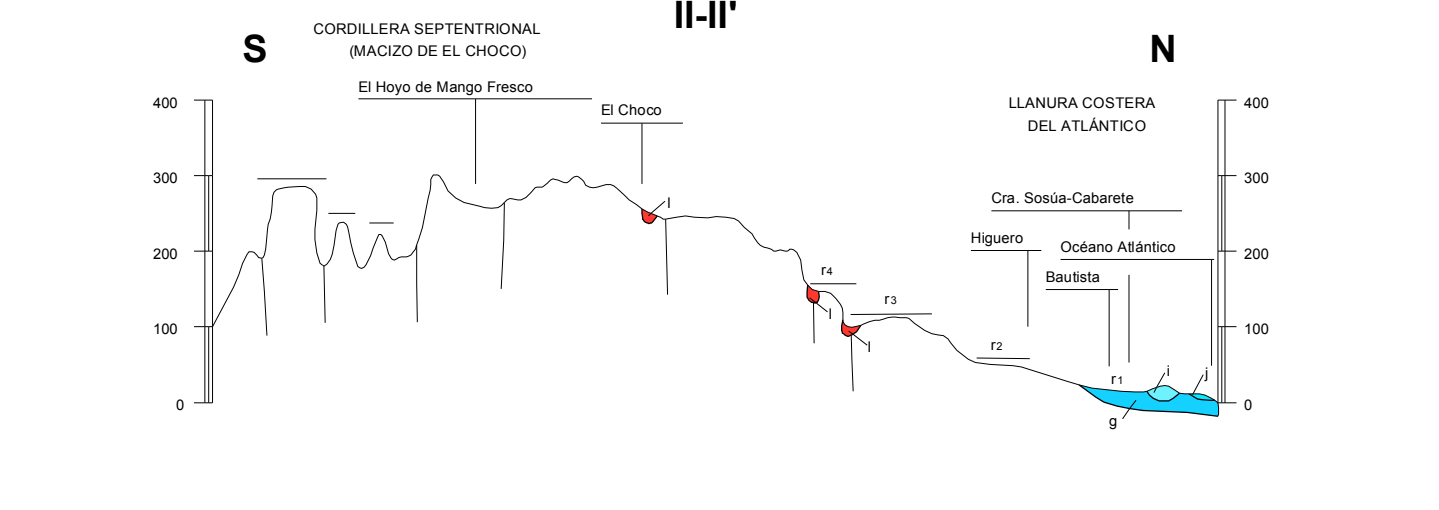
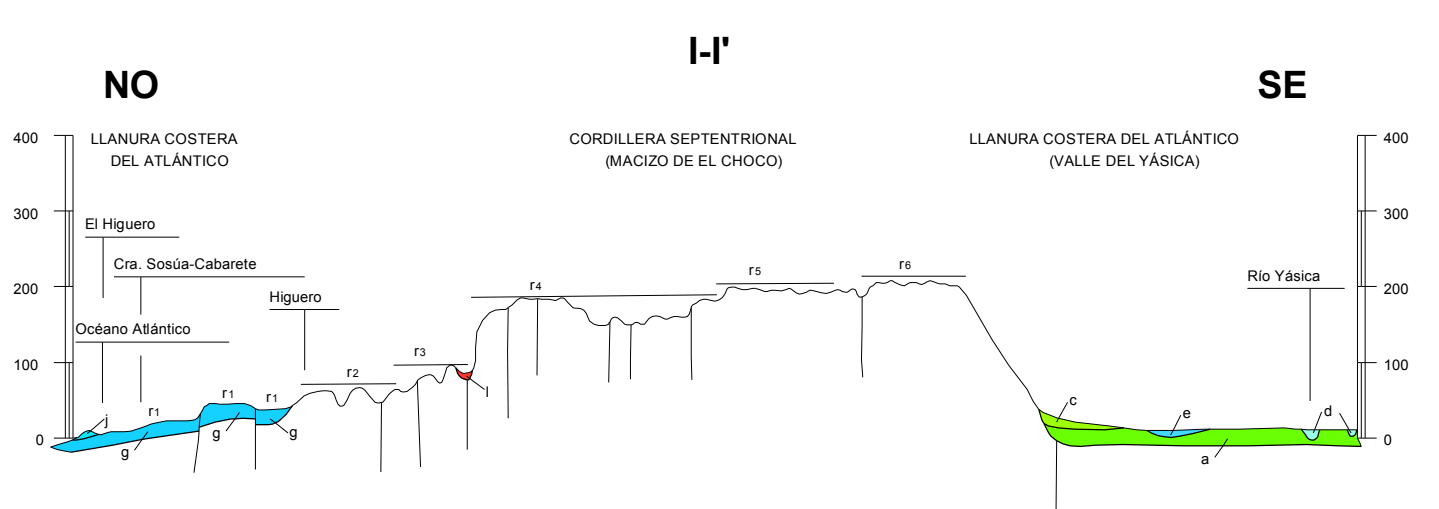
ESQUEMA DE UNIDADES MORFOGENÉTICAS



Escala 1:400.000

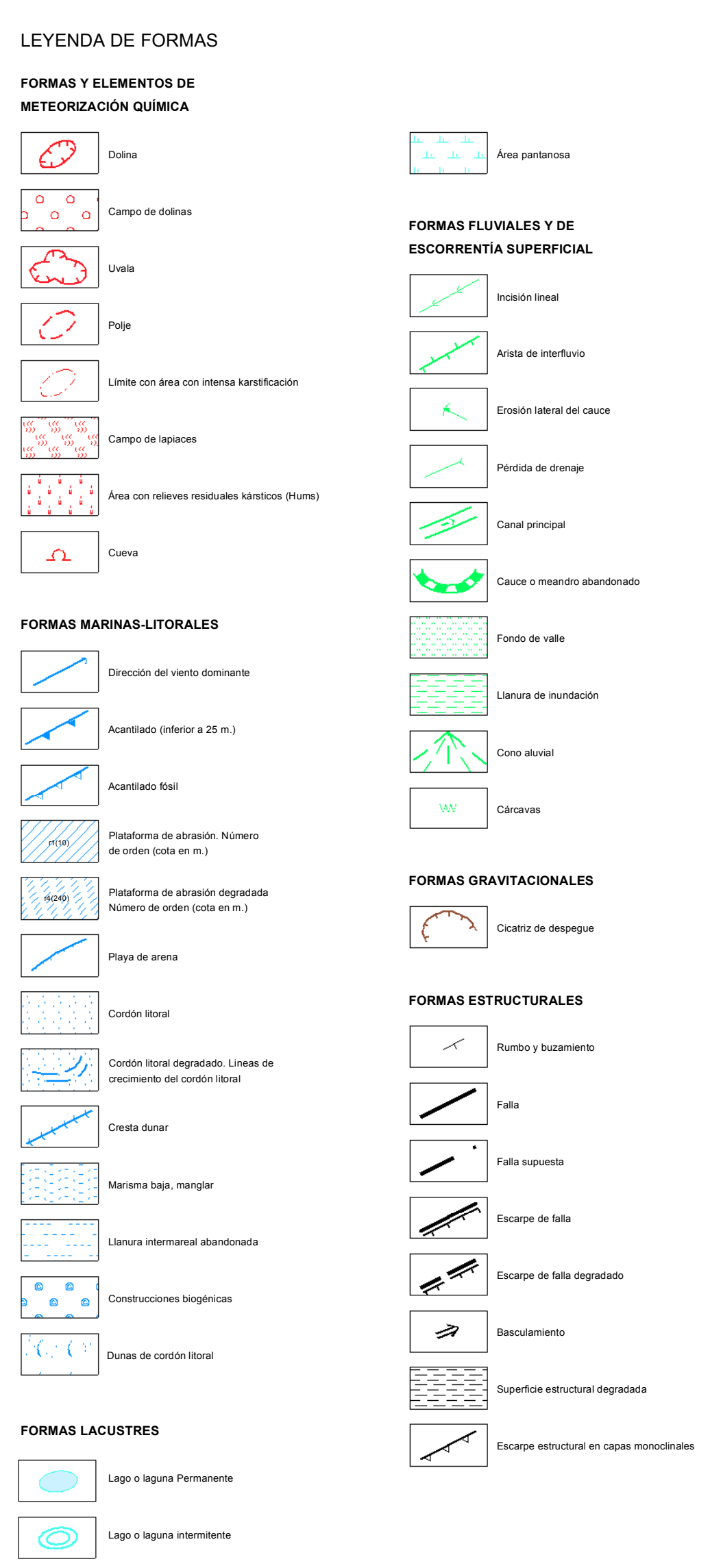


SECCIONES GEOMORFOLÓGICAS



ESCALA
HORIZONTAL: 1:100.000
VERTICAL: 1:10.000

SIMBOLOGÍA



LEYENDA

