



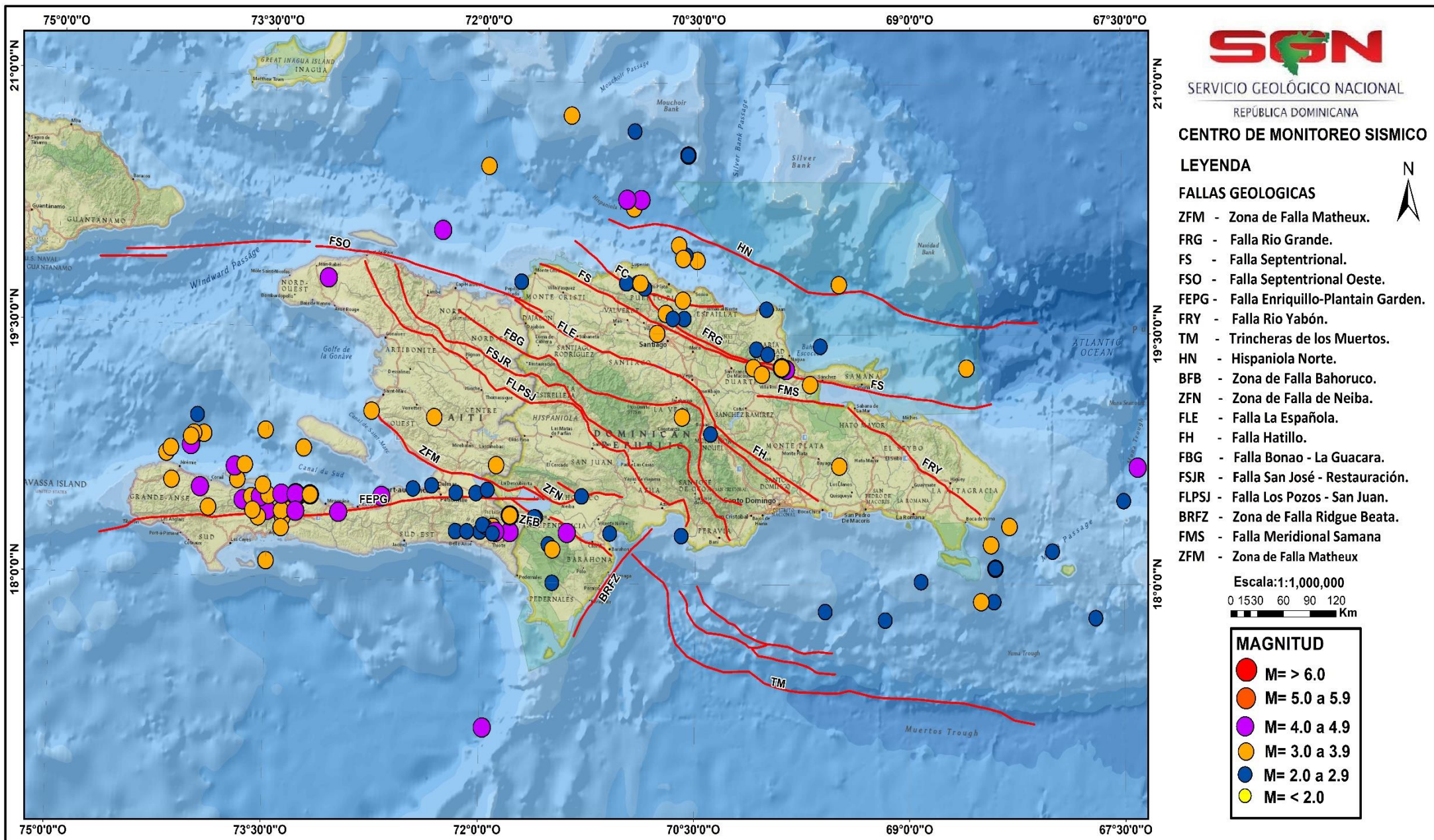
SERVICIO GEOLÓGICO NACIONAL
REPÚBLICA DOMINICANA



INFORME DE SISMICIDAD



Registro de actividad sísmica Periodo (04/01/2022 – 31/01/2022)





SERVICIO GEOLOGICO NACIONAL
REPÚBLICA DOMINICANA

Evento Sísmico

Fecha / Hora	Coordenadas	Profundidad	Magnitud
2022-01-30 / 23:16:46	18.3 N 71.4 W	6 Km	4.4



Fecha / Hora (UTC)	Mag.	Lat	Lon	Prof.	Inst.	Región
2022-01-31 11:08:52	3.5	18.5° N	73.3° W	7 km	SGN	Haití Región
2022-01-31 05:00:06	2.7	18.4° N	71.8° W	9 km	SGN	Dominican Republic Región
2022-01-31 04:57:04	3.1	18.2° N	71.0° W	5 km	SGN	Dominican Republic Region
2022-01-31 04:14:31	3.2	19.8° N	69.5° W	5 km	SGN	Dominican Republic Region
2022-01-31 03:16:46	4.4	18.3° N	71.4° W	6 km	SGN	Dominican Republic Region
2022-01-30 23:42:22	3.1	19.2° N	69.7° W	5 km	SGN	Dominican Republic Region
2022-01-30 18:54:35	3.7	18.4° N	73.3° W	11 km	SGN	Haiti Region
2022-01-30 11:11:00	4.4	18.4° N	73.3° W	5 km	SGN	Haiti Region
2022-01-30 09:55:21	3.6	18.4° N	73.3° W	6 km	SGN	Haiti Region
2022-01-30 09:24:54	4.3	18.5° N	73.4° W	5 km	SGN	Haiti Region
2022-01-30 09:22:29	4.8	18.5° N	73.3° W	5 km	SGN	Haiti Region
2022-01-30 05:45:31	4.2	18.3° N	71.4° W	5 km	SGN	Dominican Republic Region
2022-01-30 01:45:52	3.0	18.7° N	71.9° W	6 km	SGN	Dominican Republic Region
2022-01-29 23:08:23	3.5	18.4° N	73.3° W	20 km	SGN	Haiti Region
2022-01-29 20:19:19	4.6	18.4° N	73.3° W	5 km	SGN	Haiti Region
2022-01-29 13:41:27	4.0	18.4° N	73.3° W	5 km	SGN	Haiti Region
2022-01-29 09:45:43	3.3	18.1° N	73.5° W	11 km	SGN	Haiti Region
2022-01-29 08:47:21	3.4	18.4° N	73.4° W	14 km	SGN	Haiti Region
2022-01-29 08:25:01	2.4	18.0° N	67.1° W	9 km	SGN	Mona Passage
2022-01-29 07:12:39	1.3	18.2° N	67.1° W	22 km	SGN	Mona Passage
2022-01-29 06:19:51	3.1	18.4° N	73.4° W	14 km	SGN	Haiti Region
2022-01-29 04:56:38	2.1	18.5° N	67.5° W	13 km	SGN	Mona Passage
2022-01-29 03:56:13	2.6	18.2° N	68.0° W	123 km	SGN	Mona Passage
2022-01-29 02:27:48	3.2	19.7° N	70.6° W	9 km	SGN	Dominican Republic Region
2022-01-29 01:09:37	4.6	18.4° N	73.3° W	10 km	SGN	Haiti Region
2022-01-29 00:39:13	2.3	18.0° N	71.5° W	16 km	SGN	Dominican Republic Region
2022-01-28 23:30:02	4.0	18.4° N	73.3° W	31 km	SGN	Haiti Region

2022-01-28 22:44:00	3.7	18.3° N	73.4° W	5 km	SGN	Haiti Region
2022-01-28 21:50:28	4.7	18.5° N	73.3° W	22 km	SGN	Haiti Region
2022-01-28 08:17:06	2.9	18.3° N	72.1° W	5 km	SGN	Haiti Region
2022-01-28 02:45:13	4.2	18.4° N	73.4° W	11 km	SGN	Haiti Region
2022-01-28 01:17:36	4.3	19.1° N	67.1° W	12 km	SGN	Mona Passage
2022-01-27 20:52:36	4.3	19.5° N	67.4° W	77 km	SGN	Mona Passage
2022-01-27 14:59:21	4.7	18.5° N	73.3° W	10 km	SGN	Haiti Region
2022-01-27 07:50:18	2.7	18.9° N	70.4° W	23 km	SGN	Dominican Republic Region
2022-01-27 07:34:52	2.2	17.9° N	67.2° W	10 km	SGN	Mona Passage
2022-01-27 06:24:54	3.6	18.5° N	73.2° W	5 km	SGN	Haiti Region
2022-01-27 06:15:55	3.1	18.5° N	73.3° W	13 km	SGN	Haiti Region
2022-01-26 20:13:00	3.3	18.5° N	73.2° W	5 km	SGN	Haiti Region
2022-01-26 19:11:51	4.1	18.5° N	73.3° W	9 km	SGN	Haiti Region
2022-01-26 18:40:50	3.5	18.4° N	73.4° W	5 km	SGN	Haiti Region
2022-01-26 18:05:23	4.1	18.5° N	73.2° W	8 km	SGN	Haiti Region
2022-01-26 16:58:23	2.0	18.1° N	67.1° W	5 km	SGN	Mona Passage
2022-01-26 14:44:49	3.9	18.5° N	73.3° W	13 km	SGN	Haiti Region
2022-01-26 12:47:01	3.5	18.5° N	73.3° W	7 km	SGN	Haiti Region
2022-01-26 09:36:50	3.8	19.3° N	69.9° W	2 km	SGN	Dominican Republic Region
2022-01-26 09:16:23	4.2	19.3° N	69.9° W	4 km	SGN	Dominican Republic Region
2022-01-26 08:58:40	2.4	19.0° N	66.6° W	22 km	SGN	Puerto Rico Region
2022-01-26 03:41:44	3.7	18.5° N	73.3° W	4 km	SGN	Haiti Region
2022-01-26 01:49:29	3.3	18.4° N	73.3° W	5 km	SGN	Haiti Region
2022-01-26 01:46:26	3.3	19.0° N	70.6° W	205 km	SGN	Dominican Republic Region
2022-01-26 01:24:55	4.0	18.5° N	73.3° W	5 km	SGN	Haiti Region
2022-01-26 01:18:12	2.6	18.2° N	67.2° W	5 km	SGN	Mona Passage
2022-01-26 01:14:28	4.8	18.5° N	73.3° W	5 km	SGN	Haiti Region
2022-01-25 18:50:56	4.7	18.5° N	72.7° W	5 km	SGN	Haiti Region

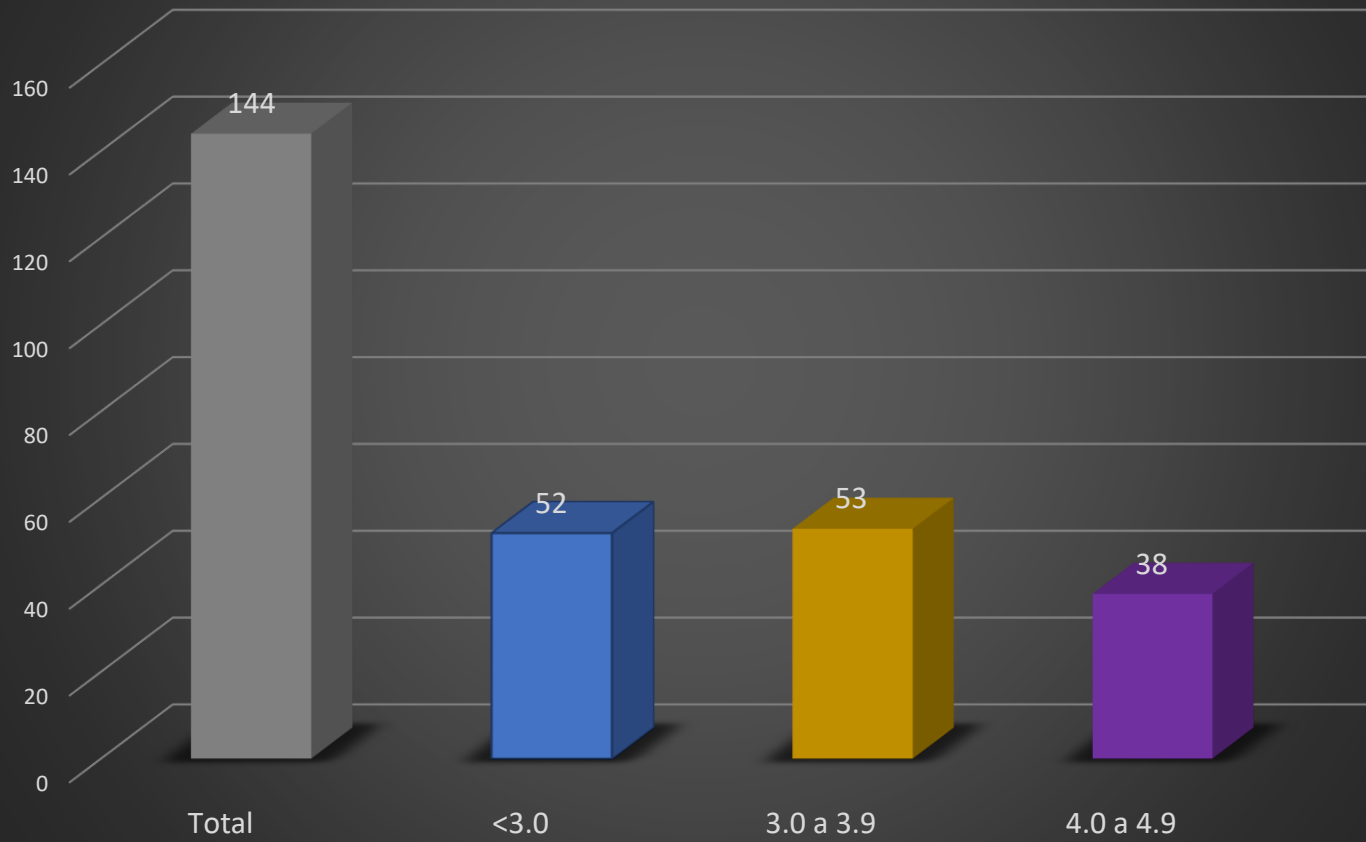
2022-01-25 16:51:32	3.7	18.5° N	73.3° W	5 km	SGN	Haiti Region
2022-01-25 15:01:05	2.7	18.9° N	67.2° W	19 km	SGN	Mona Passage
2022-01-25 11:32:49	3.5	18.3° N	73.4° W	5 km	SGN	Haiti Region
2022-01-25 11:06:05	3.8	18.5° N	73.3° W	7 km	SGN	Haiti Region
2022-01-25 09:00:54	3.2	18.4° N	73.3° W	9 km	SGN	Haiti Region
2022-01-25 06:06:05	4.2	18.5° N	73.3° W	5 km	SGN	Haiti Region
2022-01-25 04:17:00	4.1	18.5° N	73.3° W	5 km	SGN	Haiti Region
2022-01-25 04:02:57	4.0	18.5° N	73.2° W	3 km	SGN	Haiti Region
2022-01-25 03:17:47	3.1	18.5° N	73.3° W	7 km	SGN	Haiti Region
2022-01-25 02:28:52	1.9	18.1° N	67.3° W	2 km	SGN	Mona Passage
2022-01-25 02:27:32	4.4	18.4° N	73.0° W	5 km	SGN	Haiti Region
2022-01-25 01:04:47	4.5	18.5° N	73.3° W	5 km	SGN	Haiti Region
2022-01-25 01:00:44	3.3	18.5° N	73.3° W	144 km	SGN	Haiti Region
2022-01-25 00:35:02	3.7	18.4° N	73.4° W	5 km	SGN	Haiti Region
2022-01-25 00:22:59	3.1	18.3° N	73.5° W	36 km	SGN	Haiti Region
2022-01-24 23:26:46	4.4	18.5° N	73.2° W	7 km	SGN	Haiti Region
2022-01-24 21:08:50	1.8	18.0° N	66.6° W	20 km	SGN	Puerto Rico Region
2022-01-24 20:54:13	4.3	18.5° N	73.3° W	7 km	SGN	Haiti Region
2022-01-24 20:01:45	4.6	18.5° N	73.3° W	6 km	SGN	Haiti Region
2022-01-24 18:40:43	3.8	18.5° N	73.3° W	5 km	SGN	Haiti Region
2022-01-24 18:38:16	4.0	18.5° N	73.3° W	7 km	SGN	Haiti Region
2022-01-24 18:32:23	3.8	18.5° N	73.3° W	5 km	SGN	Haiti Region
2022-01-24 18:16:15	3.7	18.5° N	73.3° W	5 km	SGN	Haiti Region
2022-01-24 17:16:36	3.5	18.4° N	73.3° W	5 km	SGN	Haiti Region
2022-01-24 15:26:45	3.6	18.4° N	73.4° W	5 km	SGN	Haiti Region
2022-01-24 15:08:30	4.5	18.5° N	73.2° W	5 km	SGN	Haiti Region
2022-01-24 14:47:33	3.5	18.5° N	73.3° W	5 km	SGN	Haiti Region
2022-01-24 14:10:36	4.9	18.5° N	73.3° W	5 km	SGN	Haiti Region

2022-01-24 14:06:42	5.5	18.5° N	73.3° W	11 km	SGN	Haiti Region
2022-01-24 13:43:16	4.7	18.5° N	73.3° W	5 km	SGN	Haiti Region
2022-01-24 13:37:04	3.5	18.5° N	73.3° W	5 km	SGN	Haiti Region
2022-01-24 13:21:25	4.2	18.5° N	73.3° W	5 km	SGN	Haiti Region
2022-01-24 13:16:23	5.5	18.5° N	73.3° W	5 km	SGN	Haiti Region
2022-01-24 04:24:13	2.0	18.0° N	66.8° W	16 km	SGN	Puerto Rico Region
2022-01-24 02:09:59	2.6	19.0° N	67.1° W	16 km	SGN	Mona Passage
2022-01-24 00:53:14	4.0	18.7° N	67.4° W	4 km	SGN	Mona Passage
2022-01-23 11:06:49	4.3	19.8° N	73.1° W	5 km	SGN	Haiti Region
2022-01-23 10:25:23	2.2	18.0° N	66.7° W	26 km	SGN	Puerto Rico Region
2022-01-23 07:47:54	2.6	17.9° N	72.1° W	18 km	SGN	Haiti Region
2022-01-23 02:19:13	2.4	18.9° N	67.1° W	20 km	SGN	Mona Passage
2022-01-23 01:35:13	2.6	18.9° N	67.2° W	20 km	SGN	Mona Passage
2022-01-23 01:00:21	3.1	18.3° N	71.4° W	5 km	SGN	Dominican Republic Region
2022-01-22 19:45:58	2.0	18.1° N	67.1° W	5 km	SGN	Mona Passage
2022-01-22 17:05:20	3.8	18.5° N	73.2° W	13 km	SGN	Haiti Region
2022-01-22 16:07:55	2.9	18.6° N	70.5° W	5 km	SGN	Dominican Republic Region
2022-01-21 21:45:45	2.0	18.3° N	67.2° W	3 km	SGN	Mona Passage
2022-01-21 15:07:37	4.2	17.1° N	72.0° W	2 km	SGN	Dominican Republic Region
2022-01-21 13:51:34	3.0	18.1° N	67.1° W	13 km	SGN	Mona Passage
2022-01-21 12:54:31	2.2	17.9° N	66.8° W	7 km	SGN	Puerto Rico Region
2022-01-21 09:47:02	1.9	17.9° N	66.8° W	9 km	SGN	Puerto Rico Region
2022-01-21 09:34:50	3.3	18.7° N	69.5° W	62 km	SGN	Dominican Republic Region
2022-01-19 09:08:57	3.4	18.4° N	73.3° W	30 km	SGN	Haiti Region
2022-01-19 08:51:17	1.7	17.7° N	67.0° W	5 km	SGN	Puerto Rico Region
2022-01-19 08:18:53	3.0	19.2° N	68.8° W	5 km	SGN	North Atlantic Ocean
2022-01-19 07:47:31	1.6	18.0° N	66.7° W	10 km	SGN	Puerto Rico Region
2022-01-19 07:03:38	2.0	18.0° N	66.9° W	19 km	SGN	Puerto Rico Region

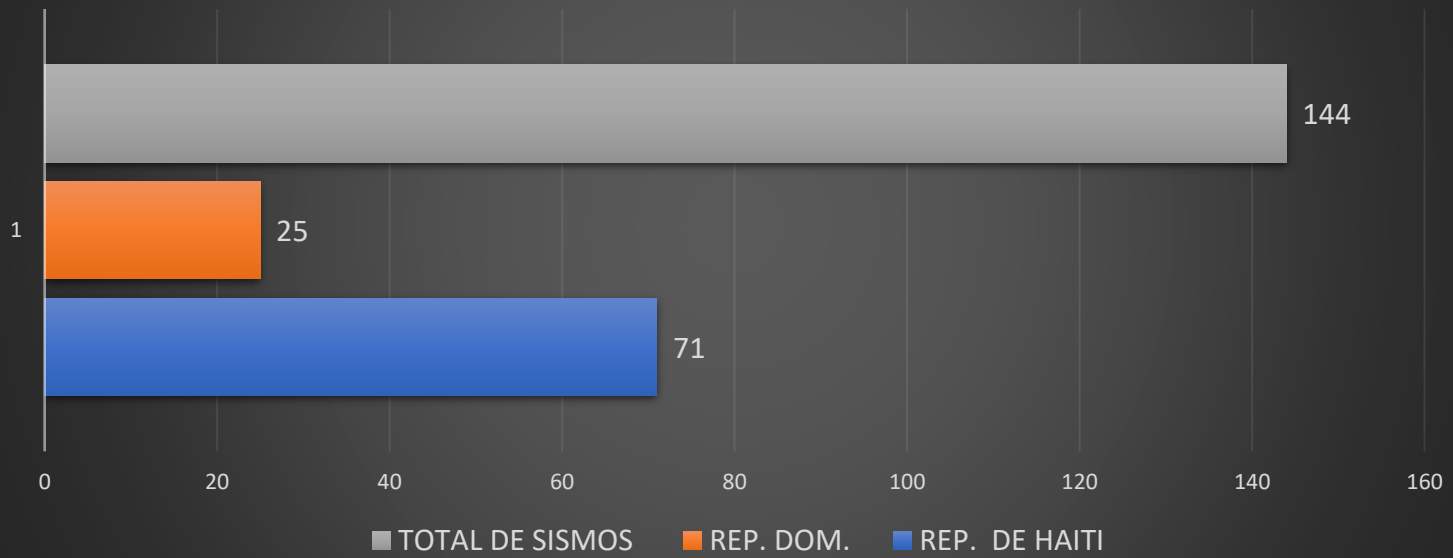
2022-01-19 05:36:50	3.0	18.2° N	71.5° W	16 km	SGN	Dominican Republic Region
2022-01-19 05:20:29	1.4	17.9° N	66.8° W	19 km	SGN	Puerto Rico Region
2022-01-19 03:05:06	3.1	18.0° N	68.3° W	34 km	SGN	Mona Passage
2022-01-19 02:02:08	2.1	18.3° N	67.3° W	3 km	SGN	Mona Passage
2022-01-18 19:51:43	1.6	18.2° N	67.1° W	18 km	SGN	Mona Passage
2022-01-18 09:59:54	2.4	17.8° N	67.0° W	10 km	SGN	Mona Passage
2022-01-18 09:33:22	1.6	18.0° N	66.8° W	4 km	SGN	Puerto Rico Region
2022-01-18 07:25:10	2.8	19.2° N	67.2° W	20 km	SGN	Mona Passage
2022-01-18 06:51:50	1.5	18.0° N	66.9° W	15 km	SGN	Puerto Rico Region
2022-01-18 05:42:59	2.7	18.0° N	68.4° W	63 km	SGN	Mona Passage
2022-01-18 03:30:58	1.5	18.0° N	66.8° W	7 km	SGN	Puerto Rico Region
2022-01-18 01:03:18	3.0	19.2° N	67.6° W	9 km	SGN	Mona Passage
2022-01-17 21:41:53	4.1	19.1° N	67.2° W	9 km	SGN	Mona Passage
2022-01-17 21:23:28	3.9	18.5° N	73.6° W	12 km	SGN	Haiti Region
2022-01-17 19:21:56	2.0	18.0° N	67.1° W	17 km	SGN	Mona Passage
2022-01-17 03:24:50	3.9	18.5° N	73.3° W	5 km	SGN	Haiti Region
2022-01-16 23:11:59	1.6	18.0° N	66.9° W	19 km	SGN	Puerto Rico Region
2022-01-16 22:54:14	3.4	18.4° N	73.6° W	18 km	SGN	Haiti Region
2022-01-16 12:16:21	3.4	18.4° N	73.3° W	9 km	SGN	Haiti Region
2022-01-16 00:21:34	2.3	18.2° N	71.2° W	17 km	SGN	Dominican Republic Region
2022-01-15 20:24:37	3.1	17.5° N	69.3° W	5 km	SGN	Dominican Republic Region
2022-01-15 10:43:01	3.0	18.2° N	67.2° W	27 km	SGN	Mona Passage
2022-01-14 21:36:09	2.7	18.5° N	67.7° W	78 km	SGN	Mona Passage
2022-01-14 13:31:32	2.7	18.0° N	71.3° W	35 km	SGN	Dominican Republic Region
2022-01-14 12:49:50	4.0	18.5° N	73.3° W	6 km	SGN	Haiti Region
2022-01-12 00:29:02	4.0	18.3° N	71.9° W	17 km	SGN	Dominican Republic Region
2022-01-07 09:58:36	2.5	18.1° N	68.4° W	139 km	SGN	Mona Passage
2022-01-07 08:37:39	2.2	18.3° N	67.5° W	12 km	SGN	Mona Passage

2022-01-06 05:52:50	1.9	18.1° N	67.0° W	4 km	SGN	Mona Passage
2022-01-06 00:09:50	3.7	19.8° N	70.9° W	6 km	SGN	Dominican Republic Region
2022-01-04 12:39:59	2.6	17.0° N	66.7° W	14 km	SGN	Caribbean Sea
2022-01-04 10:20:26	3.3	19.8° N	71.0° W	4 km	SGN	Dominican Republic Region
2022-01-04 00:32:36	4.1	20.3° N	71.0° W	10 km	SGN	Dominican Republic Region

DISTRIBUCIÓN POR MAGNITUD

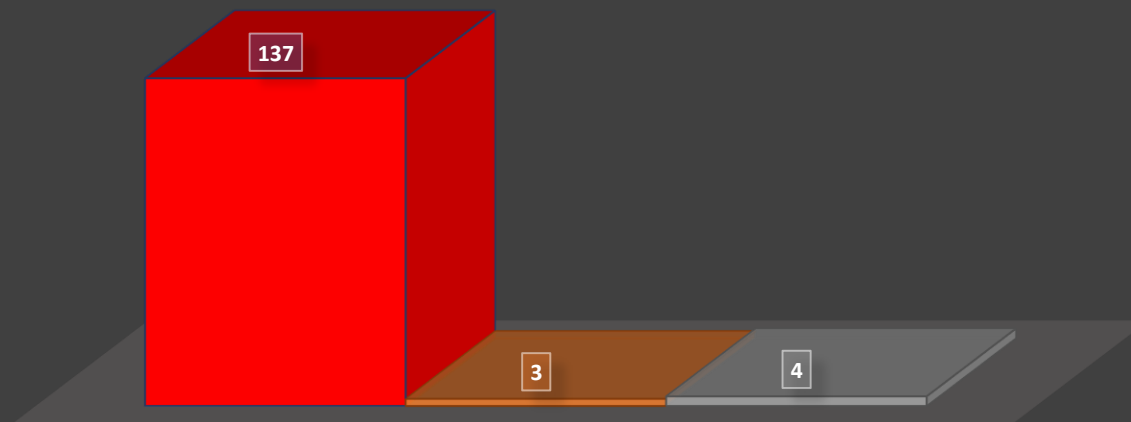


DISTRIBUCIÓN POR REGION



DISTRIBUCIÓN POR PROFUNDIDAD

■ <50 (Km) ■ 50 - 100 (Km) ■ 101 - 200 (Km)



ACTIVIDAD SISMICA DIARIO

